

Product datasheet for **TA345607**

DLX1 Rabbit Polyclonal Antibody

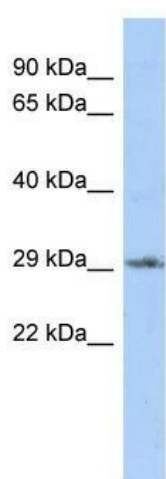
Product data:

Product Type:	Primary Antibodies
Applications:	WB
Recommended Dilution:	WB
Reactivity:	Human
Host:	Rabbit
Isotype:	IgG
Clonality:	Polyclonal
Immunogen:	The immunogen for anti-DLX1 antibody: synthetic peptide directed towards the N terminal of human DLX1. Synthetic peptide located within the following region: MTMTMPESLNSPVSGKAVFMEFGPPNQQMSPSPMSHGHYSMHCLHSAGH
Formulation:	Liquid. Purified antibody supplied in 1x PBS buffer with 0.09% (w/v) sodium azide and 2% sucrose. <i>Note that this product is shipped as lyophilized powder to China customers.</i>
Purification:	Affinity Purified
Conjugation:	Unconjugated
Storage:	Store at -20°C as received.
Stability:	Stable for 12 months from date of receipt.
Predicted Protein Size:	27 kDa
Gene Name:	distal-less homeobox 1
Database Link:	NP_835221 Entrez Gene 1745 Human P56177



[View online »](#)

- Background:** DLX1 is a member of a homeobox transcription factor family. It is localized to the nucleus where it may function as a transcriptional regulator of signals from multiple TGF- β superfamily members. DLX1 may play a role in the control of craniofacial patterning and the differentiation and survival of inhibitory neurons in the forebrain. This gene encodes a member of a homeobox transcription factor gene family similar to the *Drosophila* distal-less gene. The encoded protein is localized to the nucleus where it may function as a transcriptional regulator of signals from multiple TGF- β superfamily members. The encoded protein may play a role in the control of craniofacial patterning and the differentiation and survival of inhibitory neurons in the forebrain. This gene is located in a tail-to-tail configuration with another member of the family on the long arm of chromosome 2. Alternatively spliced transcript variants encoding different isoforms have been described.
- Synonyms:** distal-less homeo box 1; distal-less homeobox 1; OTTHUMP00000082494; OTTHUMP00000082497
- Note:** Immunogen Sequence Homology: Dog: 100%; Pig: 100%; Rat: 100%; Horse: 100%; Human: 100%; Mouse: 100%; Bovine: 100%; Rabbit: 100%; Guinea pig: 100%; Zebrafish: 86%
- Protein Families:** ES Cell Differentiation/IPS, Transcription Factors

Product images:

WB Suggested Anti-DLX1 Antibody Titration: 0.2-1 ug/ml; ELISA Titer: 1: 312500; Positive Control: THP-1 cell lysate