

Product datasheet for **TA345606**

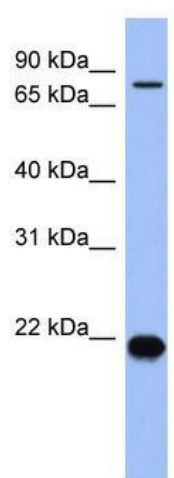
ZNF800 Rabbit Polyclonal Antibody

Product data:

Product Type:	Primary Antibodies
Applications:	WB
Recommended Dilution:	WB
Reactivity:	Human
Host:	Rabbit
Isotype:	IgG
Clonality:	Polyclonal
Immunogen:	The immunogen for anti-ZNF800 antibody: synthetic peptide directed towards the N terminal of human ZNF800. Synthetic peptide located within the following region: MPLRDKYCQTDHHHHCCEPVYILEPGDPPLLQQPLQTSKSGIQQIIECF
Formulation:	Liquid. Purified antibody supplied in 1x PBS buffer with 0.09% (w/v) sodium azide and 2% sucrose.
Purification:	Affinity Purified
Conjugation:	Unconjugated
Storage:	Store at -20°C as received.
Stability:	Stable for 12 months from date of receipt.
Predicted Protein Size:	75 kDa
Gene Name:	zinc finger protein 800
Database Link:	NP_789784 Entrez Gene 168850 Human Q2TB10
Background:	ZNF800 belongs to the krueppel C2H2-type zinc-finger protein family. It contains 7 C2H2-type zinc fingers. ZNF800 may be involved in transcriptional regulation.
Synonyms:	FLJ43301; MGC130032; MGC130033
Note:	Immunogen Sequence Homology: Dog: 100%; Pig: 100%; Rat: 100%; Horse: 100%; Human: 100%; Rabbit: 100%; Guinea pig: 100%; Mouse: 93%; Zebrafish: 86%



[View online »](#)

Product images:

WB Suggested Anti-ZNF800 Antibody Titration:
0.2-1 ug/ml; ELISA Titer: 1: 312500; Positive
Control: Human Small Intestine