

## Product datasheet for **TA345605**

### OLIG3 Rabbit Polyclonal Antibody

#### Product data:

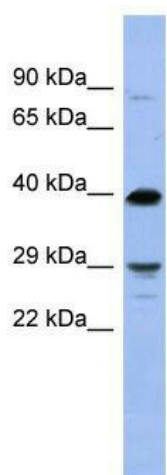
Product Type:	Primary Antibodies
Applications:	WB
Recommended Dilution:	WB
Reactivity:	Human
Host:	Rabbit
Isotype:	IgG
Clonality:	Polyclonal
Immunogen:	The immunogen for anti-OLIG3 antibody: synthetic peptide directed towards the N terminal of human OLIG3. Synthetic peptide located within the following region: MNSDSSSVSSRASSPDMDEMYLRDHHHRHHHHQESRLNSVSSTQGDMMQK
Formulation:	Liquid. Purified antibody supplied in 1x PBS buffer with 0.09% (w/v) sodium azide and 2% sucrose. <i>Note that this product is shipped as lyophilized powder to China customers.</i>
Purification:	Affinity Purified
Conjugation:	Unconjugated
Storage:	Store at -20°C as received.
Stability:	Stable for 12 months from date of receipt.
Predicted Protein Size:	29 kDa
Gene Name:	oligodendrocyte transcription factor 3
Database Link:	<a href="#">NP_786923</a> <a href="#">Entrez Gene 167826 Human</a> <a href="#">Q7RTU3</a>
Background:	OLIG3 may determine the distinct specification program of class A neurons in the dorsal part of the spinal cord and suppress specification of class B neurons.
Synonyms:	Bhlhb7; bHLHe20
Note:	Immunogen Sequence Homology: Dog: 100%; Pig: 100%; Rat: 100%; Horse: 100%; Human: 100%; Mouse: 100%; Bovine: 100%; Guinea pig: 100%; Zebrafish: 85%



[View online »](#)

Protein Families: Transcription Factors

**Product images:**



WB Suggested Anti-OLIG3 Antibody Titration: 0.2-1 ug/ml; ELISA Titer: 1: 312500; Positive Control: COLO205 cell lysate