

## Product datasheet for **TA345598**

### ZNF707 Rabbit Polyclonal Antibody

#### Product data:

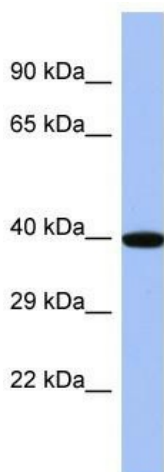
Product Type:	Primary Antibodies
Applications:	WB
Recommended Dilution:	WB
Reactivity:	Human
Host:	Rabbit
Isotype:	IgG
Clonality:	Polyclonal
Immunogen:	The immunogen for Anti-ZNF707 antibody is: synthetic peptide directed towards the C-terminal region of Human ZNF707. Synthetic peptide located within the following region: ECGKSFRWPKGFSIHRRLLHTKRFYECGHCGKGRHLGFFTRHQRTHRHG
Formulation:	Liquid. Purified antibody supplied in 1x PBS buffer with 0.09% (w/v) sodium azide and 2% sucrose. <i>Note that this product is shipped as lyophilized powder to China customers.</i>
Purification:	Affinity Purified
Conjugation:	Unconjugated
Storage:	Store at -20°C as received.
Stability:	Stable for 12 months from date of receipt.
Predicted Protein Size:	43 kDa
Gene Name:	zinc finger protein 707
Database Link:	<a href="#">NP_776192</a> <a href="#">Entrez Gene 286075 Human</a> <a href="#">Q96C28</a>
Background:	ZNF707 belongs to the krueppel C2H2-type zinc-finger protein family and may be involved in transcriptional regulation.
Synonyms:	zinc finger protein 707
Note:	Immunogen Sequence Homology: Rat: 100%; Horse: 100%; Human: 100%; Mouse: 100%; Pig: 89%



[View online »](#)

Protein Families: Transcription Factors

### Product images:



Host: Rabbit  
Target Name: ZNF707  
Sample Tissue: HT1080 Cell Lysate  
Antibody Dilution: 1.0 $\mu$ g/ml

Host: Rabbit; Target Name: ZNF707; Sample Tissue: HT1080 Whole cell lysates; Antibody Dilution: 1.0  $\mu$ g/ml