

Product datasheet for **TA345593**

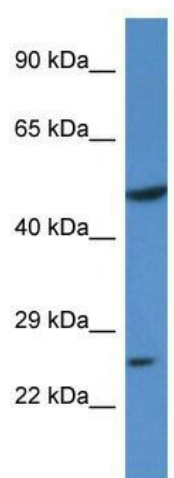
KLF17 Rabbit Polyclonal Antibody

Product data:

Product Type:	Primary Antibodies
Applications:	WB
Recommended Dilution:	WB
Reactivity:	Human
Host:	Rabbit
Isotype:	IgG
Clonality:	Polyclonal
Immunogen:	The immunogen for anti-KLF17 antibody: synthetic peptide directed towards the N terminal of human KLF17. Synthetic peptide located within the following region: YGRPQAEMEQEAGELSRWQAAHQAAQDNENSAPILNMSSSSGSSGVHTSW
Formulation:	Liquid. Purified antibody supplied in 1x PBS buffer with 0.09% (w/v) sodium azide and 2% sucrose. <i>Note that this product is shipped as lyophilized powder to China customers.</i>
Purification:	Affinity Purified
Conjugation:	Unconjugated
Storage:	Store at -20°C as received.
Stability:	Stable for 12 months from date of receipt.
Predicted Protein Size:	42 kDa
Gene Name:	Kruppel-like factor 17
Database Link:	NP_775755 Entrez Gene 128209 Human Q5JT82
Background:	KLF17 binds G/C-rich sites via its zinc fingers and activates transcription from CACCC-box elements. It may be a germ cell-specific transcription factor that plays important roles in spermatid differentiation and oocyte development.
Synonyms:	Zfp393; ZNF393
Note:	Immunogen Sequence Homology: Human: 100%; Rat: 82%



[View online »](#)

Product images:

WB Suggested Anti-KLF17 Antibody Titration: 0.2-1 ug/ml; ELISA Titer: 1: 62500; Positive Control: HepG2 cell lysate