

## Product datasheet for **TA345589**

### NFAT2 (NFATC1) Rabbit Polyclonal Antibody

#### Product data:

Product Type:	Primary Antibodies
Applications:	WB
Recommended Dilution:	WB, IHC
Reactivity:	Human
Host:	Rabbit
Isotype:	IgG
Clonality:	Polyclonal
Immunogen:	The immunogen for anti-NFATC1 antibody: synthetic peptide directed towards the C terminal of human NFATC1. Synthetic peptide located within the following region: LLPEVHEDGSPNLAPIVTVKREPELDQLYLDDVNEIRNDLSSTSTHS
Formulation:	Liquid. Purified antibody supplied in 1x PBS buffer with 0.09% (w/v) sodium azide and 2% sucrose. <i>Note that this product is shipped as lyophilized powder to China customers.</i>
Purification:	Affinity Purified
Conjugation:	Unconjugated
Storage:	Store at -20°C as received.
Stability:	Stable for 12 months from date of receipt.
Predicted Protein Size:	100 kDa
Gene Name:	nuclear factor of activated T-cells 1
Database Link:	<a href="#">NP_765975</a> <a href="#">Entrez Gene 4772 Human</a> <a href="#">O95644</a>



[View online »](#)

**Background:** NFATC1 is a component of the nuclear factor of activated T cells DNA-binding transcription complex. This complex consists of at least two components: a preexisting cytosolic component that translocates to the nucleus upon T cell receptor (TCR) stimulation, and an inducible nuclear component. Proteins belonging to this family of transcription factors play a central role in inducible gene transcription during immune response. The product of this gene is an inducible nuclear component. It functions as a major molecular target for the immunosuppressive drugs such as cyclosporin A. Different isoforms of this protein may regulate inducible expression of different cytokine genes.

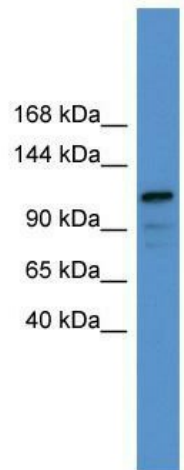
**Synonyms:** NF-ATC; NF-ATc1.2; NFAT2; NFATc

**Note:** Immunogen Sequence Homology: Rat: 100%; Human: 100%; Mouse: 100%; Dog: 93%; Pig: 91%; Horse: 91%; Guinea pig: 91%; Zebrafish: 86%; Bovine: 79%

**Protein Families:** Druggable Genome, Transcription Factors

**Protein Pathways:** Axon guidance, B cell receptor signaling pathway, Natural killer cell mediated cytotoxicity, T cell receptor signaling pathway, VEGF signaling pathway, Wnt signaling pathway

### Product images:



WB Suggested Anti-NFATC1 Antibody Titration:  
0.2-1 ug/ml; ELISA Titer: 1: 312500; Positive  
Control: COLO205 cell lysate