

## Product datasheet for **TA345577**

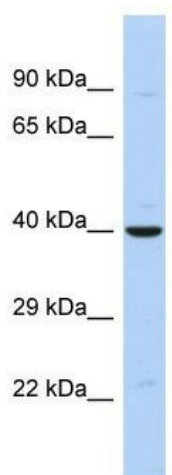
### ZNF551 Rabbit Polyclonal Antibody

#### Product data:

Product Type:	Primary Antibodies
Applications:	WB
Recommended Dilution:	WB
Reactivity:	Human
Host:	Rabbit
Isotype:	IgG
Clonality:	Polyclonal
Immunogen:	The immunogen for Anti-ZNF551 antibody is: synthetic peptide directed towards the N-terminal region of Human ZNF551. Synthetic peptide located within the following region: FEDVAIYFSQEEWELLDQSQRFLYCDVMLENFAHVTSLSGYCHGMENEAIA
Formulation:	Liquid. Purified antibody supplied in 1x PBS buffer with 0.09% (w/v) sodium azide and 2% sucrose.
Purification:	Affinity Purified
Conjugation:	Unconjugated
Storage:	Store at -20°C as received.
Stability:	Stable for 12 months from date of receipt.
Predicted Protein Size:	39 kDa
Gene Name:	zinc finger protein 551
Database Link:	<a href="#">NP_001257867</a> <a href="#">Entrez Gene 90233 Human</a> <a href="#">Q7Z340</a>
Background:	ZNF551 may be involved in transcriptional regulation.
Synonyms:	DKFZp686H1038; KOX23; MGC52307
Note:	Immunogen Sequence Homology: Dog: 100%; Pig: 100%; Horse: 100%; Human: 100%; Bovine: 100%; Rat: 93%; Rabbit: 93%; Guinea pig: 93%
Protein Families:	Transcription Factors



[View online »](#)

**Product images:**

Host: Rabbit; Target Name: ZNF551; Sample Tissue: MCF7 Whole cell lysates; Antibody Dilution: 1.0 ug/ml; ZNF551 is supported by BioGPS gene expression data to be expressed in MCF7