

Product datasheet for **TA345567**

NPAS3 Rabbit Polyclonal Antibody

Product data:

Product Type:	Primary Antibodies
Applications:	WB
Recommended Dilution:	WB
Reactivity:	Human
Host:	Rabbit
Isotype:	IgG
Clonality:	Polyclonal
Immunogen:	The immunogen for Anti-NPAS3 antibody is: synthetic peptide directed towards the middle region of Human NPAS3. Synthetic peptide located within the following region: CESTYQNLQALRKEKSRDAARSRRGKENFEFYELAKLLPLPAAITSQLDK
Formulation:	Liquid. Purified antibody supplied in 1x PBS buffer with 0.09% (w/v) sodium azide and 2% sucrose. <i>Note that this product is shipped as lyophilized powder to China customers.</i>
Purification:	Affinity Purified
Conjugation:	Unconjugated
Storage:	Store at -20°C as received.
Stability:	Stable for 12 months from date of receipt.
Predicted Protein Size:	28 kDa
Gene Name:	neuronal PAS domain protein 3
Database Link:	NP_001158221 Entrez Gene 64067 Human Q8IXF0
Background:	This gene encodes a member of the basic helix-loop-helix and PAS domain-containing family of transcription factors. The encoded protein is localized to the nucleus and may regulate genes involved in neurogenesis. Chromosomal abnormalities that affect the coding potential of this gene are associated with schizophrenia and mental retardation. Alternate splicing results in multiple transcript variants.
Synonyms:	bHLHe12; MOP6; PASD6

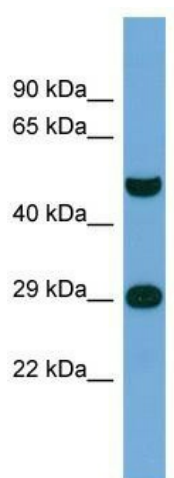


[View online »](#)

Note: Immunogen Sequence Homology: Dog: 100%; Pig: 100%; Rat: 100%; Goat: 100%; Horse: 100%; Human: 100%; Mouse: 100%; Bovine: 100%; Rabbit: 100%; Zebrafish: 100%; Guinea pig: 100%

Protein Families: Druggable Genome

Product images:



Host: Rabbit; Target Name: NPAS3; Sample Tissue: THP-1 Whole Cell lysates; Antibody Dilution: 1.0 ug/ml