

## Product datasheet for **TA345560**

### GLIS3 Rabbit Polyclonal Antibody

#### Product data:

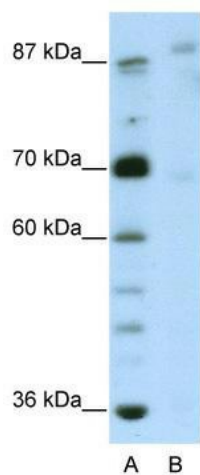
Product Type:	Primary Antibodies
Applications:	IHC, WB
Recommended Dilution:	IHC, WB
Reactivity:	Human
Host:	Rabbit
Isotype:	IgG
Clonality:	Polyclonal
Immunogen:	The immunogen for anti-GLIS3 antibody: synthetic peptide directed towards the N terminal of human GLIS3. Synthetic peptide located within the following region: PPASQVSTACNQISPSLQRAMNAANLNIPPSDTRSLISRESLASTTLSLT
Formulation:	Liquid. Purified antibody supplied in 1x PBS buffer with 0.09% (w/v) sodium azide and 2% sucrose. <i>Note that this product is shipped as lyophilized powder to China customers.</i>
Purification:	Protein A purified
Conjugation:	Unconjugated
Storage:	Store at -20°C as received.
Stability:	Stable for 12 months from date of receipt.
Predicted Protein Size:	84 kDa
Gene Name:	GLIS family zinc finger 3
Database Link:	<a href="#">NP_689842</a> <a href="#">Entrez Gene 169792 Human</a> <a href="#">Q8NEA6</a>
Background:	GLIS3 is a member of the GLI-similar zinc finger protein family and has five C2H2-type zinc finger domains. GLIS3 functions as both a repressor and activator of transcription and is specifically involved in the development of pancreatic beta cells, the thyroid, eye, liver and kidney. Mutations in this gene have been associated with neonatal diabetes and congenital hypothyroidism (NDH).
Synonyms:	NDH; ZNF515



[View online »](#)

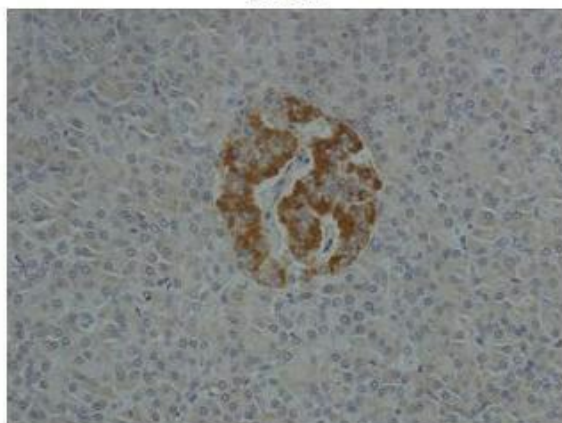
**Note:** Immunogen Sequence Homology: Dog: 100%; Pig: 100%; Rat: 100%; Horse: 100%; Human: 100%; Rabbit: 100%; Guinea pig: 100%; Mouse: 93%

**Product images:**



WB Suggested Anti-GLIS3 Antibody Titration: 2.5 ug/ml; ELISA Titer: 1: 62500; Positive Control: HepG2 cell lysate

**GLIS3**



Sample Type: Human Pancreas Primary Antibody Dilution: 1: 10; Secondary Antibody: Anti-rabbit HRP; Secondary Antibody: ilution: 1: 1000; Gene Name: GLIS3; Submitted by: Anonymous