

Product datasheet for **TA345557**

MIER3 Rabbit Polyclonal Antibody

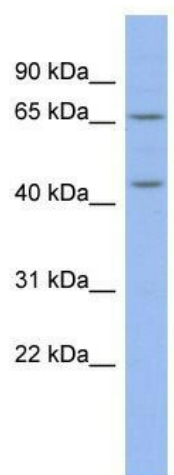
Product data:

| | |
|-------------------------|---|
| Product Type: | Primary Antibodies |
| Applications: | WB |
| Recommended Dilution: | WB |
| Reactivity: | Human |
| Host: | Rabbit |
| Isotype: | IgG |
| Clonality: | Polyclonal |
| Immunogen: | The immunogen for anti-MIER3 antibody: synthetic peptide directed towards the middle region of human MIER3. Synthetic peptide located within the following region: MNMCSSESERPAKRLKMGIAVPESFMNEVSVNNLGVDVFENHHTHITSAKM |
| Formulation: | Liquid. Purified antibody supplied in 1x PBS buffer with 0.09% (w/v) sodium azide and 2% sucrose. |
| Purification: | Affinity Purified |
| Conjugation: | Unconjugated |
| Storage: | Store at -20°C as received. |
| Stability: | Stable for 12 months from date of receipt. |
| Predicted Protein Size: | 61 kDa |
| Gene Name: | MIER family member 3 |
| Database Link: | NP_689835 Entrez Gene 166968 Human Q7Z3K6 |
| Background: | MIER3 is a transcriptional repressor. |
| Synonyms: | DKFZp686L09111; DKFZp781G1119; DKFZp781I1119; FLJ35954 |
| Note: | Immunogen Sequence Homology: Dog: 100%; Pig: 100%; Rat: 100%; Horse: 100%; Human: 100%; Mouse: 100%; Yeast: 100%; Bovine: 100%; Rabbit: 100% |
| Protein Families: | Transcription Factors |



[View online »](#)

Product images:



WB Suggested Anti-MIER3 Antibody Titration: 0.2-1 ug/ml; ELISA Titer: 1: 62500; Positive Control: COLO205 cell lysate