

Product datasheet for **TA345556**

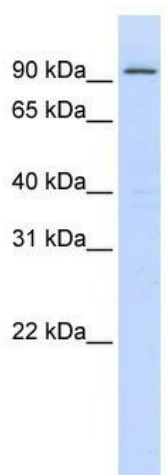
ZNF540 Rabbit Polyclonal Antibody

Product data:

| | |
|-------------------------|--|
| Product Type: | Primary Antibodies |
| Applications: | WB |
| Recommended Dilution: | WB |
| Reactivity: | Human |
| Host: | Rabbit |
| Isotype: | IgG |
| Clonality: | Polyclonal |
| Immunogen: | The immunogen for anti-ZNF540 antibody: synthetic peptide directed towards the middle region of human ZNF540. Synthetic peptide located within the following region: CGKAFRLNSHLTEHQRIHTGEKPYECKVCRKAQRQYSHLYQHKTTHNVI |
| Formulation: | Liquid. Purified antibody supplied in 1x PBS buffer with 0.09% (w/v) sodium azide and 2% sucrose. |
| Purification: | Affinity Purified |
| Conjugation: | Unconjugated |
| Storage: | Store at -20°C as received. |
| Stability: | Stable for 12 months from date of receipt. |
| Predicted Protein Size: | 77 kDa |
| Gene Name: | zinc finger protein 540 |
| Database Link: | NP_689819 Entrez Gene 163255 Human Q8NDQ6 |
| Background: | ZNF540 belongs to the krueppel C2H2-type zinc-finger protein family. It contains 17 C2H2-type zinc fingers and 1 KRAB domain. ZNF540 may be involved in transcriptional regulation. |
| Synonyms: | Nbla10512 |
| Note: | Immunogen Sequence Homology: Human: 100%; Dog: 83%; Pig: 79%; Rat: 79%; Horse: 79%; Rabbit: 79%; Guinea pig: 79%; Mouse: 77% |
| Protein Families: | Transcription Factors |



[View online »](#)

Product images:

WB Suggested Anti-ZNF540 Antibody Titration:
0.2-1 ug/ml; ELISA Titer: 1: 62500; Positive
Control: MCF7 cell lysate