

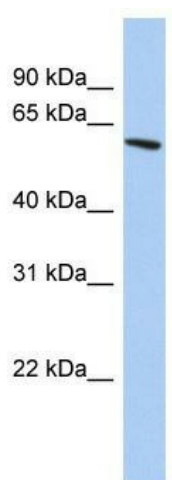
Product datasheet for **TA345555**

ZNF567 Rabbit Polyclonal Antibody

Product data:

Product Type:	Primary Antibodies
Applications:	WB
Recommended Dilution:	WB
Reactivity:	Human
Host:	Rabbit
Isotype:	IgG
Clonality:	Polyclonal
Immunogen:	The immunogen for anti-ZNF567 antibody: synthetic peptide directed towards the N terminal of human ZNF567. Synthetic peptide located within the following region: TSFAGHTCLEENWKAEDFLVKFKEHQEKYSRSVVSINHKKLVEKSKIYE
Formulation:	Liquid. Purified antibody supplied in 1x PBS buffer with 0.09% (w/v) sodium azide and 2% sucrose.
Purification:	Affinity Purified
Conjugation:	Unconjugated
Storage:	Store at -20°C as received.
Stability:	Stable for 12 months from date of receipt.
Predicted Protein Size:	71 kDa
Gene Name:	zinc finger protein 567
Database Link:	NP_689816 Entrez Gene 163081 Human Q8N184
Background:	ZNF567 may be involved in transcriptional regulation.
Synonyms:	MGC45586
Note:	Immunogen Sequence Homology: Pig: 100%; Horse: 100%; Human: 100%; Dog: 93%; Bovine: 93%; Rabbit: 93%; Rat: 92%
Protein Families:	Transcription Factors


[View online »](#)

Product images:


WB Suggested Anti-ZNF567 Antibody Titration:
0.2-1 ug/ml; ELISA Titer: 1: 1562500; Positive
Control: PANC1 cell lysate