

## Product datasheet for **TA345552**

### CBL2 Rabbit Polyclonal Antibody

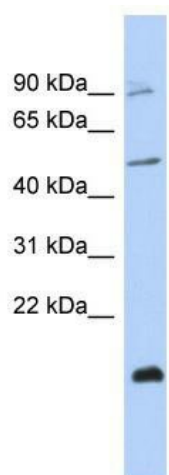
#### Product data:

Product Type:	Primary Antibodies
Applications:	WB
Recommended Dilution:	WB
Reactivity:	Human
Host:	Rabbit
Isotype:	IgG
Clonality:	Polyclonal
Immunogen:	The immunogen for anti-ZNF645 antibody: synthetic peptide directed towards the middle region of human ZNF645. Synthetic peptide located within the following region: LSPQFTQTDAMDHRRWPAWKRLSPCPTRSPPPSTLHGRSHHSHQRRHRR
Formulation:	Liquid. Purified antibody supplied in 1x PBS buffer with 0.09% (w/v) sodium azide and 2% sucrose. <i>Note that this product is shipped as lyophilized powder to China customers.</i>
Purification:	Affinity Purified
Conjugation:	Unconjugated
Storage:	Store at -20°C as received.
Stability:	Stable for 12 months from date of receipt.
Predicted Protein Size:	49 kDa
Gene Name:	zinc finger protein 645
Database Link:	<a href="#">NP_689790</a> <a href="#">Entrez Gene 158506 Human</a> <a href="#">Q8N7E2</a>
Background:	ZNF645 contains 1 RING-type zinc finger, which is probably involved in mediating protein-protein interactions.
Synonyms:	CT138; HAKAIL
Note:	Immunogen Sequence Homology: Human: 100%; Yeast: 85%; Dog: 75%



[View online »](#)

## Product images:



WB Suggested Anti-ZNF645 Antibody Titration:  
0.2-1 ug/ml; ELISA Titer: 1: 312500; Positive  
Control: MCF7 cell lysate