

Product datasheet for **TA345551**

nkx6.3 (NKX6-3) Rabbit Polyclonal Antibody

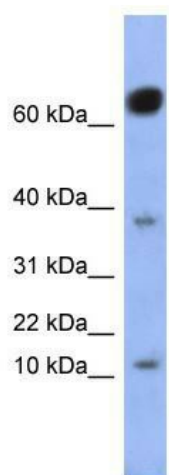
Product data:

Product Type:	Primary Antibodies
Applications:	WB
Recommended Dilution:	WB
Reactivity:	Human
Host:	Rabbit
Isotype:	IgG
Clonality:	Polyclonal
Immunogen:	The immunogen for anti-NKX6-3 antibody: synthetic peptide directed towards the middle region of human NKX6-3. Synthetic peptide located within the following region: EPSSTPRAPGGAGAGAGGDRAPSENEDEYKPLDPDSDDEKIRLLLLRK
Formulation:	Liquid. Purified antibody supplied in 1x PBS buffer with 0.09% (w/v) sodium azide and 2% sucrose. <i>Note that this product is shipped as lyophilized powder to China customers.</i>
Purification:	Affinity Purified
Conjugation:	Unconjugated
Storage:	Store at -20°C as received.
Stability:	Stable for 12 months from date of receipt.
Predicted Protein Size:	14 kDa
Gene Name:	NK6 homeobox 3
Database Link:	NP_689781 Entrez Gene 157848 Human A6NJ46
Background:	Nkx6.3 is a new member of the Nkx6 subfamily of homeodomain proteins. Members of the Nkx family of homeodomain proteins are involved in a variety of developmental processes such as cell fate determination in the CNS and in the pancreas. Nkx6.3 is expressed
Synonyms:	NKX6.3
Note:	Immunogen Sequence Homology: Dog: 100%; Pig: 100%; Rat: 100%; Human: 100%; Mouse: 100%; Bovine: 100%; Rabbit: 100%; Guinea pig: 100%; Zebrafish: 93%; Sheep: 90%; Horse: 86%



[View online »](#)

Product images:



WB Suggested Anti-NKX6-3 Antibody Titration:
0.2-1 ug/ml; ELISA Titer: 1: 312500; Positive
Control: Human Small Intestine