

Product datasheet for **TA345550**

nkx6.3 (NKX6-3) Rabbit Polyclonal Antibody

Product data:

Product Type:	Primary Antibodies
Applications:	WB
Recommended Dilution:	WB
Reactivity:	Human
Host:	Rabbit
Isotype:	IgG
Clonality:	Polyclonal
Immunogen:	The immunogen for anti-NKX6-3 antibody: synthetic peptide directed towards the N terminal of human NKX6-3. Synthetic peptide located within the following region: RLCSGPWGLPELQPAAPSSSAAQLPWGESWGEEADTPACLSASGVWFQNR
Formulation:	Liquid. Purified antibody supplied in 1x PBS buffer with 0.09% (w/v) sodium azide and 2% sucrose. <i>Note that this product is shipped as lyophilized powder to China customers.</i>
Purification:	Protein A purified
Conjugation:	Unconjugated
Storage:	Store at -20°C as received.
Stability:	Stable for 12 months from date of receipt.
Predicted Protein Size:	14 kDa
Gene Name:	NK6 homeobox 3
Database Link:	NP_689781 Entrez Gene 157848 Human A6NJ46



[View online »](#)

Background:

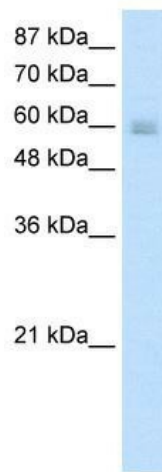
Nkx6.3 is a new member of the Nkx6 subfamily of homeodomain proteins. Members of the Nkx family of homeodomain proteins are involved in a variety of developmental processes such as cell fate determination in the CNS and in the pancreas. Nkx6.3 is expressed in the developing CNS and gastro-intestinal tract. Nkx6.3 shows a remarkably selective expression in a subpopulation of differentiating V2 neurons at caudal hindbrain levels. In the gut, Nkx6.3 is expressed in duodenal and glandular stomach endoderm and at the end of gestation Nkx6.3 became restricted to the base of the gastric units in the glandular stomach.

Synonyms:

NKX6.3

Note:

Immunogen Sequence Homology: Human: 100%

Product images:

WB Suggested Anti-NKX6-3 Antibody Titration: 5.0 ug/ml; ELISA Titer: 1: 312500; Positive Control: Jurkat cell lysate