

## Product datasheet for **TA345544**

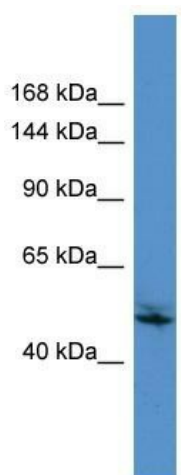
### ZNF690 (ZSCAN29) Rabbit Polyclonal Antibody

#### Product data:

Product Type:	Primary Antibodies
Applications:	WB
Recommended Dilution:	WB
Reactivity:	Human
Host:	Rabbit
Isotype:	IgG
Clonality:	Polyclonal
Immunogen:	The immunogen for Anti-ZSCAN29 antibody is: synthetic peptide directed towards the C-terminal region of Human ZSCAN29. Synthetic peptide located within the following region: SSDLRAHHRHTHTGEKPYGCHDCGKCFSSALNKHGEIHAREKLLTQSAP
Formulation:	Liquid. Purified antibody supplied in 1x PBS buffer with 0.09% (w/v) sodium azide and 2% sucrose.
Purification:	Affinity Purified
Conjugation:	Unconjugated
Storage:	Store at -20°C as received.
Stability:	Stable for 12 months from date of receipt.
Predicted Protein Size:	50 kDa
Gene Name:	zinc finger and SCAN domain containing 29
Database Link:	<a href="#">NP_689668</a> <a href="#">Entrez Gene 146050 Human</a> <a href="#">Q8IWY8</a>
Background:	ZSCAN29 may be involved in transcriptional regulation.
Synonyms:	Zfp690; ZNF690
Note:	Immunogen Sequence Homology: Human: 100%; Pig: 93%; Dog: 86%; Rat: 86%; Horse: 86%; Bovine: 86%; Rabbit: 86%; Guinea pig: 79%


[View online »](#)

## Product images:



Host: Rabbit

Target Name: ZSCAN29

Sample Tissue: Jurkat Cell Lysate

Antibody Dilution: 1.0 µg/ml

Host: Rabbit; Target Name: ZSCAN29; Sample Tissue: Jurkat Whole Cell lysates; Antibody Dilution: 1.0 µg/ml