

## Product datasheet for **TA345543**

### ZNF572 Rabbit Polyclonal Antibody

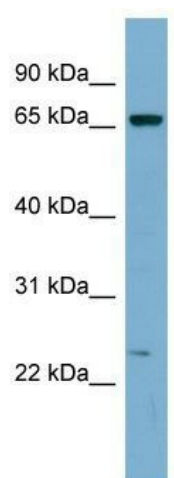
#### Product data:

Product Type:	Primary Antibodies
Applications:	WB
Recommended Dilution:	WB
Reactivity:	Human
Host:	Rabbit
Isotype:	IgG
Clonality:	Polyclonal
Immunogen:	The immunogen for anti-ZNF572 antibody: synthetic peptide directed towards the middle region of human ZNF572. Synthetic peptide located within the following region: PYKCTSCEKCFRSAYLSQHRKIHVEKPFESPVDVGFDPHEWTWKNCSGEM
Formulation:	Liquid. Purified antibody supplied in 1x PBS buffer with 0.09% (w/v) sodium azide and 2% sucrose. <i>Note that this product is shipped as lyophilized powder to China customers.</i>
Purification:	Affinity Purified
Conjugation:	Unconjugated
Storage:	Store at -20°C as received.
Stability:	Stable for 12 months from date of receipt.
Predicted Protein Size:	61 kDa
Gene Name:	zinc finger protein 572
Database Link:	<a href="#">NP_689625</a> <a href="#">Entrez Gene 137209 Human</a> <a href="#">Q7Z3I7</a>
Background:	ZNF572 belongs to the krueppel C2H2-type zinc-finger protein family and may be involved in transcriptional regulation.
Synonyms:	FLJ38002
Note:	Immunogen Sequence Homology: Human: 100%; Bovine: 86%; Rat: 77%; Horse: 77%



[View online »](#)

## Product images:



WB Suggested Anti-ZNF572 Antibody Titration:  
0.2-1 ug/ml; ELISA Titer: 1: 312500; Positive  
Control: COLO205 cell lysate