

Product datasheet for **TA345540**

KBTBD5 (KLHL40) Rabbit Polyclonal Antibody

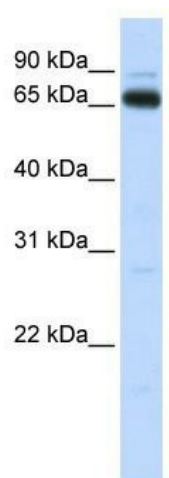
Product data:

| | |
|--------------------------------|---|
| Product Type: | Primary Antibodies |
| Applications: | WB |
| Recommended Dilution: | WB |
| Reactivity: | Human |
| Host: | Rabbit |
| Isotype: | IgG |
| Clonality: | Polyclonal |
| Immunogen: | The immunogen for anti-KBTBD5 antibody: synthetic peptide directed towards the C terminal of human KBTBD5. Synthetic peptide located within the following region: ELVPTELNDIWRYNEEEKKWEGVLREIAYAAGATFLPVRLNVLCLTKM |
| Formulation: | Liquid. Purified antibody supplied in 1x PBS buffer with 0.09% (w/v) sodium azide and 2% sucrose. <i>Note that this product is shipped as lyophilized powder to China customers.</i> |
| Purification: | Affinity Purified |
| Conjugation: | Unconjugated |
| Storage: | Store at -20°C as received. |
| Stability: | Stable for 12 months from date of receipt. |
| Predicted Protein Size: | 69 kDa |
| Gene Name: | kelch like family member 40 |
| Database Link: | NP_689606 Entrez Gene 131377 Human Q2TBA0 |
| Background: | The exact function of KBTBD5 remains unknown. |
| Synonyms: | KBTBD5; NEM8; SRYP; SYRP |
| Note: | Immunogen Sequence Homology: Human: 100%; Rabbit: 100%; Dog: 93%; Pig: 93%; Horse: 93%; Mouse: 93%; Bovine: 93%; Guinea pig: 86%; Rat: 79% |



[View online »](#)

Product images:



WB Suggested Anti-KBTBD5 Antibody Titration:
0.2-1 ug/ml; ELISA Titer: 1: 312500; Positive
Control: Human Muscle