

Product datasheet for **TA345537**

SPIC Rabbit Polyclonal Antibody

Product data:

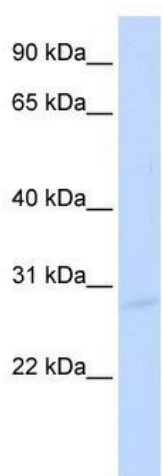
Product Type:	Primary Antibodies
Applications:	WB
Recommended Dilution:	WB
Reactivity:	Human
Host:	Rabbit
Isotype:	IgG
Clonality:	Polyclonal
Immunogen:	The immunogen for anti-SPIC antibody: synthetic peptide directed towards the middle region of human SPIC. Synthetic peptide located within the following region: LQRLSPSYFLGKEIFYSQCVQPDQEYLSLNNWNANYNITYANYHELNHHD
Formulation:	Liquid. Purified antibody supplied in 1x PBS buffer with 0.09% (w/v) sodium azide and 2% sucrose. <i>Note that this product is shipped as lyophilized powder to China customers.</i>
Purification:	Affinity Purified
Conjugation:	Unconjugated
Storage:	Store at -20°C as received.
Stability:	Stable for 12 months from date of receipt.
Predicted Protein Size:	29 kDa
Gene Name:	Spi-C transcription factor
Database Link:	NP_689536 Entrez Gene 121599 Human Q8N5J4
Background:	SPIC controls the development of red pulp macrophages required for red blood cells recycling and iron homeostasis. SPIC is a transcription factor that binds to the PU-box, a purine-rich DNA sequence (5'-GAGGA[AT]-3') that can act as a lymphoid-specific enhancer. SPIC regulates VCAM1 gene expression.
Synonyms:	SPI-C
Note:	Immunogen Sequence Homology: Pig: 100%; Human: 100%; Bovine: 86%; Horse: 79%



[View online »](#)

Protein Families: Transcription Factors

Product images:



WB Suggested Anti-SPIC Antibody Titration: 0.2-1 ug/ml; ELISA Titer: 1: 62500; Positive Control: Transfected 293T