

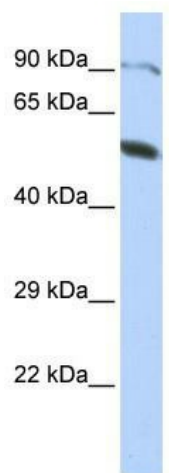
## Product datasheet for **TA345535**

### ZNF641 Rabbit Polyclonal Antibody

#### Product data:

Product Type:	Primary Antibodies
Applications:	WB
Recommended Dilution:	WB
Reactivity:	Human
Host:	Rabbit
Isotype:	IgG
Clonality:	Polyclonal
Immunogen:	The immunogen for anti-ZNF641 antibody: synthetic peptide directed towards the middle region of human ZNF641. Synthetic peptide located within the following region: RHWLTHTGKPFQCPRCEKSFGRKHLLDRHLLTHQGQSPRNSWDRGTSVF
Formulation:	Liquid. Purified antibody supplied in 1x PBS buffer with 0.09% (w/v) sodium azide and 2% sucrose.
Purification:	Affinity Purified
Conjugation:	Unconjugated
Storage:	Store at -20°C as received.
Stability:	Stable for 12 months from date of receipt.
Predicted Protein Size:	49 kDa
Gene Name:	zinc finger protein 641
Database Link:	<a href="#">NP_689533</a> <a href="#">Entrez Gene 121274 Human</a> <a href="#">Q96N77</a>
Background:	ZNF641 belongs to the krueppel C2H2-type zinc-finger protein family. It contains 5 C2H2-type zinc fingers and 1 KRAB domain. ZNF641 activates transcriptional activities of SRE and AP-1.
Synonyms:	DKFZp667D1012; FLJ31295
Note:	Immunogen Sequence Homology: Human: 100%; Dog: 93%; Pig: 93%; Rat: 93%; Horse: 93%; Bovine: 93%; Mouse: 86%; Rabbit: 86%; Guinea pig: 79%
Protein Families:	Transcription Factors


[View online »](#)

**Product images:**


WB Suggested Anti-ZNF641 Antibody Titration:  
0.2-1 ug/ml; ELISA Titer: 1: 62500; Positive  
Control: HepG2 cell lysate