

## Product datasheet for **TA345533**

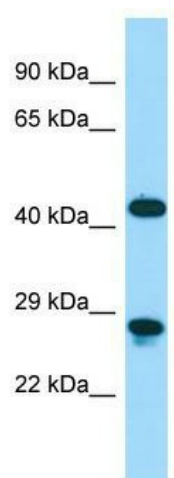
### Dmbx1 Rabbit Polyclonal Antibody

#### Product data:

Product Type:	Primary Antibodies
Applications:	WB
Recommended Dilution:	WB
Reactivity:	Mouse
Host:	Rabbit
Isotype:	IgG
Clonality:	Polyclonal
Immunogen:	The immunogen for Anti-Dmbx1 antibody is: synthetic peptide directed towards the C-terminal region of Mouse Dmbx1. Synthetic peptide located within the following region: SLSAAAAAHQGVWGSPLLAPPTGLAPASAALNSKTTSIENLRLRAKQHA
Formulation:	Liquid. Purified antibody supplied in 1x PBS buffer with 0.09% (w/v) sodium azide and 2% sucrose.
Purification:	Affinity Purified
Conjugation:	Unconjugated
Storage:	Store at -20°C as received.
Stability:	Stable for 12 months from date of receipt.
Predicted Protein Size:	41 kDa
Gene Name:	diencephalon/mesencephalon homeobox 1
Database Link:	<a href="#">NP_570935</a> <a href="#">Entrez Gene 140477 Mouse</a> <a href="#">Q91ZK4</a>
Background:	Dmbx1 functions as a transcriptional repressor. It may repress OTX2-mediated transactivation by forming a heterodimer with OTX2 on the P3C (5'-TAATCCGATTA-3') sequence and is required for brain development, neonatal survival, postnatal growth, and nursing ability.
Synonyms:	MBX; OTX3; PAXB
Note:	Immunogen Sequence Homology: Pig: 100%; Rat: 100%; Horse: 100%; Human: 100%; Mouse: 100%; Bovine: 100%; Rabbit: 100%; Zebrafish: 100%; Guinea pig: 100%; Dog: 93%



[View online »](#)

**Product images:**

Host: Rabbit; Target Name: Dmbx1; Sample  
Tissue: Mouse Stomach lysates; Antibody  
Dilution: 1.0 ug/ml