

## Product datasheet for **TA345531**

### ZFP38 (ZSCAN21) Rabbit Polyclonal Antibody

#### Product data:

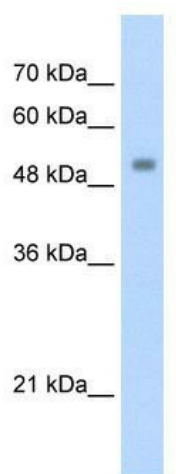
Product Type:	Primary Antibodies
Applications:	WB
Recommended Dilution:	WB
Reactivity:	Human
Host:	Rabbit
Isotype:	IgG
Clonality:	Polyclonal
Immunogen:	The immunogen for anti-ZSCAN21 antibody: synthetic peptide directed towards the C terminal of human ZSCAN21. Synthetic peptide located within the following region: AFNHSSNFNKHHRHTGKPYWCHHCGKTFCSKSNLSKHQRVHTGEGEAP
Formulation:	Liquid. Purified antibody supplied in 1x PBS buffer with 0.09% (w/v) sodium azide and 2% sucrose. <i>Note that this product is shipped as lyophilized powder to China customers.</i>
Purification:	Protein A purified
Conjugation:	Unconjugated
Storage:	Store at -20°C as received.
Stability:	Stable for 12 months from date of receipt.
Predicted Protein Size:	54 kDa
Gene Name:	zinc finger and SCAN domain containing 21
Database Link:	<a href="#">NP_666019</a> <a href="#">Entrez Gene 7589 Human</a> <a href="#">Q9Y5A6</a>
Background:	ZSCAN21 belongs to the krueppel C2H2-type zinc-finger protein family and is a strong transcriptional activator.
Synonyms:	NY-REN-21; Zipro1; ZNF38
Note:	Immunogen Sequence Homology: Dog: 100%; Pig: 100%; Rat: 100%; Horse: 100%; Human: 100%; Mouse: 100%; Rabbit: 100%; Guinea pig: 100%; Bovine: 92%; Zebrafish: 79%



[View online »](#)

Protein Families: Transcription Factors

**Product images:**



WB Suggested Anti-ZSCAN21 Antibody Titration:  
1.25 ug/ml; ELISA Titer: 1: 62500; Positive Control:  
Transfected 293T