

Product datasheet for **TA345530**

Islet 2 (ISL2) Rabbit Polyclonal Antibody

Product data:

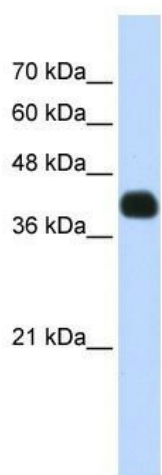
Product Type:	Primary Antibodies
Applications:	WB
Recommended Dilution:	WB
Reactivity:	Human
Host:	Rabbit
Isotype:	IgG
Clonality:	Polyclonal
Immunogen:	The immunogen for anti-ISL2 antibody: synthetic peptide directed towards the N terminal of human ISL2. Synthetic peptide located within the following region: MVDIIFHYPFLGAMGDHSKPKGTAMCVGCGSQIHDQFILRVSPDLEWHA
Formulation:	Liquid. Purified antibody supplied in 1x PBS buffer with 0.09% (w/v) sodium azide and 2% sucrose. <i>Note that this product is shipped as lyophilized powder to China customers.</i>
Purification:	Affinity Purified
Conjugation:	Unconjugated
Storage:	Store at -20°C as received.
Stability:	Stable for 12 months from date of receipt.
Predicted Protein Size:	40 kDa
Gene Name:	ISL LIM homeobox 2
Database Link:	NP_665804 Entrez Gene 64843 Human Q96A47
Background:	ISL2 is the transcriptional factor that defines subclasses of motoneurons that segregate into columns in the spinal cord and select distinct axon pathways.
Synonyms:	FLJ10160
Note:	Immunogen Sequence Homology: Pig: 100%; Rat: 100%; Horse: 100%; Human: 100%; Mouse: 100%; Bovine: 100%; Rabbit: 100%; Zebrafish: 100%; Guinea pig: 100%; Dog: 92%



[View online »](#)

Protein Families: Transcription Factors

Product images:



WB Suggested Anti-ISL2 Antibody Titration: 0.2-1 ug/ml; ELISA Titer: 1: 62500; Positive Control: Transfected 293T