

Product datasheet for **TA345526**

GSH2 (GSX2) Rabbit Polyclonal Antibody

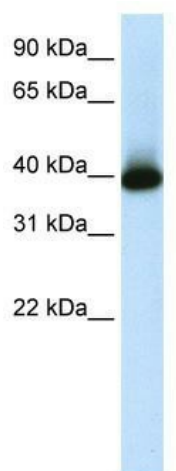
Product data:

Product Type:	Primary Antibodies
Applications:	WB
Recommended Dilution:	WB
Reactivity:	Human
Host:	Rabbit
Isotype:	IgG
Clonality:	Polyclonal
Immunogen:	The immunogen for anti-GSH2 antibody: synthetic peptide directed towards the C terminal of human GSH2. Synthetic peptide located within the following region: LLELEREFSSNMYLSRLRRRIEATYLNLSEKQVKIWFQRRRVKHKKEGKG
Formulation:	Liquid. Purified antibody supplied in 1x PBS buffer with 0.09% (w/v) sodium azide and 2% sucrose. <i>Note that this product is shipped as lyophilized powder to China customers.</i>
Purification:	Protein A purified
Conjugation:	Unconjugated
Storage:	Store at -20°C as received.
Stability:	Stable for 12 months from date of receipt.
Predicted Protein Size:	32 kDa
Gene Name:	GS homeobox 2
Database Link:	NP_573574 Entrez Gene 170825 Human Q9BZM3
Background:	homeobox protein GSH-2
Synonyms:	GSH2
Note:	Immunogen Sequence Homology: Dog: 100%; Pig: 100%; Rat: 100%; Horse: 100%; Human: 100%; Mouse: 100%; Bovine: 100%; Rabbit: 100%; Zebrafish: 100%; Guinea pig: 100%



[View online »](#)

Product images:



WB Suggested Anti-GSH2 Antibody Titration: 1.25 ug/ml; ELISA Titer: 1: 62500; Positive Control: LN18 cell lysate