

Product datasheet for **TA345525**

ZNF485 Rabbit Polyclonal Antibody

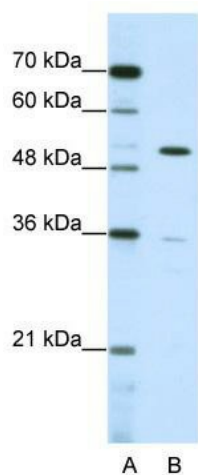
Product data:

Product Type:	Primary Antibodies
Applications:	WB
Recommended Dilution:	WB
Reactivity:	Human
Host:	Rabbit
Isotype:	IgG
Clonality:	Polyclonal
Immunogen:	The immunogen for anti-ZNF485 antibody: synthetic peptide directed towards the C terminal of human ZNF485. Synthetic peptide located within the following region: RHSSGLVEHQRLHTGKPYKCNCEGKAFPRSSALKQHKKIHNKERAMKCS
Formulation:	Liquid. Purified antibody supplied in 1x PBS buffer with 0.09% (w/v) sodium azide and 2% sucrose. <i>Note that this product is shipped as lyophilized powder to China customers.</i>
Purification:	Affinity Purified
Conjugation:	Unconjugated
Storage:	Store at -20°C as received.
Stability:	Stable for 12 months from date of receipt.
Predicted Protein Size:	46 kDa
Gene Name:	zinc finger protein 485
Database Link:	NP_660355 Entrez Gene 220992 Human Q8NCK3
Background:	ZNF485 contains 1 KRAB domain and 11 C2H2-type zinc fingers. It belongs to the krueppel C2H2-type zinc-finger protein family and may be involved in transcriptional regulation.
Synonyms:	OTTHUMP00000019487
Note:	Immunogen Sequence Homology: Human: 100%; Bovine: 90%; Zebrafish: 82%; Dog: 79%
Protein Families:	Transcription Factors



[View online »](#)

Product images:



WB Suggested Anti-ZNF485 Antibody Titration:
0.2-1 ug/ml; ELISA Titer: 1: 62500; Positive
Control: HepG2 cell lysate