

## Product datasheet for **TA345524**

### ZNF485 Rabbit Polyclonal Antibody

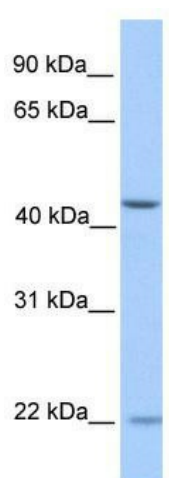
#### Product data:

Product Type:	Primary Antibodies
Applications:	WB
Recommended Dilution:	WB
Reactivity:	Human
Host:	Rabbit
Isotype:	IgG
Clonality:	Polyclonal
Immunogen:	The immunogen for anti-ZNF485 antibody: synthetic peptide directed towards the N terminal of human ZNF485. Synthetic peptide located within the following region: MAPRAQIQGPLTFGDVAVAFTRIEWRHLDAAQRALYRDVMLENYGNLVSV
Formulation:	Liquid. Purified antibody supplied in 1x PBS buffer with 0.09% (w/v) sodium azide and 2% sucrose.
Purification:	Affinity Purified
Conjugation:	Unconjugated
Storage:	Store at -20°C as received.
Stability:	Stable for 12 months from date of receipt.
Predicted Protein Size:	46 kDa
Gene Name:	zinc finger protein 485
Database Link:	<a href="#">NP_660355</a> <a href="#">Entrez Gene 220992 Human</a> <a href="#">Q8NCK3</a>
Background:	ZNF485 contains 1 KRAB domain and 11 C2H2-type zinc fingers. It belongs to the krueppel C2H2-type zinc-finger protein family and may be involved in transcriptional regulation.
Synonyms:	OTTHUMP00000019487
Note:	Immunogen Sequence Homology: Human: 100%; Mouse: 100%; Rabbit: 100%; Dog: 92%; Rat: 90%
Protein Families:	Transcription Factors



[View online »](#)

## Product images:



WB Suggested Anti-ZNF485 Antibody Titration:  
0.2-1 ug/ml; Positive Control: Human Liver