

## Product datasheet for **TA345523**

### ZNF342 (ZNF296) Rabbit Polyclonal Antibody

#### Product data:

Product Type:	Primary Antibodies
Applications:	IHC, WB
Recommended Dilution:	WB, IHC
Reactivity:	Human
Host:	Rabbit
Isotype:	IgG
Clonality:	Polyclonal
Immunogen:	The immunogen for anti-ZNF342 antibody: synthetic peptide directed towards the C terminal of human ZNF342. Synthetic peptide located within the following region: YACAQSSKLNRRHRRMHGMTPGSTRFECPHCHVPFGLRATLDKHLRQKHPE
Formulation:	Liquid. Purified antibody supplied in 1x PBS buffer with 0.09% (w/v) sodium azide and 2% sucrose. <i>Note that this product is shipped as lyophilized powder to China customers.</i>
Purification:	Affinity Purified
Conjugation:	Unconjugated
Storage:	Store at -20°C as received.
Stability:	Stable for 12 months from date of receipt.
Predicted Protein Size:	51 kDa
Gene Name:	zinc finger protein 296
Database Link:	<a href="#">NP_660331</a> <a href="#">Entrez Gene 162979 Human</a> <a href="#">Q8WUU4</a>
Background:	ZNF342 contains 6 C2H2-type zinc fingers and belongs to the krueppel C2H2-type zinc-finger protein family. It may be involved in transcriptional regulation.
Synonyms:	ZFP296; ZNF342
Note:	Immunogen Sequence Homology: Human: 100%; Rat: 86%; Rabbit: 86%; Pig: 85%; Guinea pig: 85%; Dog: 79%



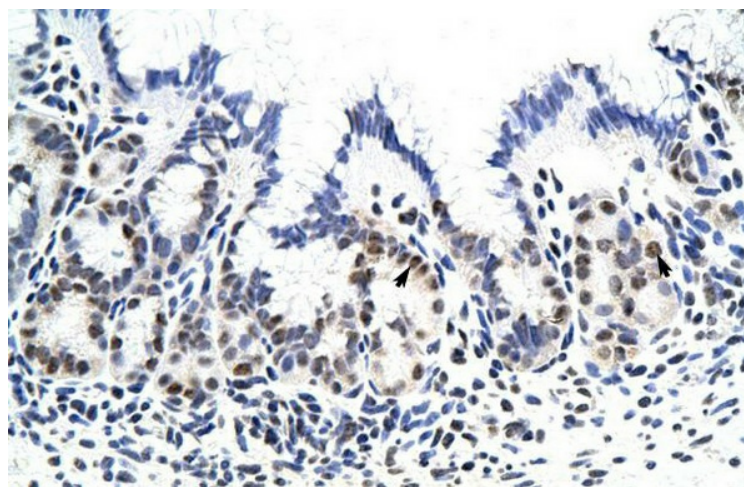
[View online »](#)

Protein Families: Transcription Factors

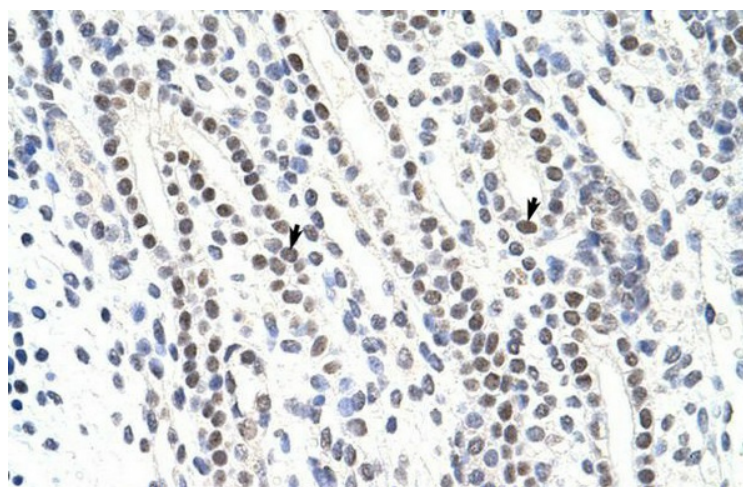
**Product images:**



WB Suggested Anti-ZNF342 Antibody Titration:  
0.125 ug/ml; ELISA Titer: 1: 62500; Positive  
Control: Jurkat cell lysate



Human Stomach



Human kidney