

## Product datasheet for **TA345521**

### ZNF31 (ZSCAN20) Rabbit Polyclonal Antibody

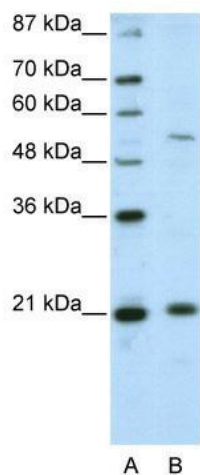
#### Product data:

Product Type:	Primary Antibodies
Applications:	WB
Recommended Dilution:	WB
Reactivity:	Human
Host:	Rabbit
Isotype:	IgG
Clonality:	Polyclonal
Immunogen:	The immunogen for anti-ZNF31 antibody: synthetic peptide directed towards the N terminal of human ZNF31. Synthetic peptide located within the following region: MAMALELQAQASPQPEPELLIVKLEEDSWGSESKLWEKDRGSVSGPEAS
Formulation:	Liquid. Purified antibody supplied in 1x PBS buffer with 0.09% (w/v) sodium azide and 2% sucrose.
Purification:	Protein A purified
Conjugation:	Unconjugated
Storage:	Store at -20°C as received.
Stability:	Stable for 12 months from date of receipt.
Predicted Protein Size:	49 kDa
Gene Name:	zinc finger and SCAN domain containing 20
Database Link:	<a href="#">NP_660281</a> <a href="#">Entrez Gene 7579 Human</a> <a href="#">P17040</a>
Background:	ZNF31 contains 1 KRAB domain and 10 C2H2-type zinc fingers. ZNF31 belongs to the krueppel C2H2-type zinc-finger protein family and may be involved in transcriptional regulation.
Synonyms:	KOX29; ZFP-31; ZNF31; ZNF360
Note:	Immunogen Sequence Homology: Human: 100%; Dog: 92%; Horse: 92%; Pig: 85%; Bovine: 79%
Protein Families:	Transcription Factors



[View online »](#)

## Product images:



WB Suggested Anti-ZNF31 Antibody Titration: 2.5 ug/ml; ELISA Titer: 1: 62500; Positive Control: HepG2 cell lysate