

Product datasheet for **TA345514**

ZUP1 Rabbit Polyclonal Antibody

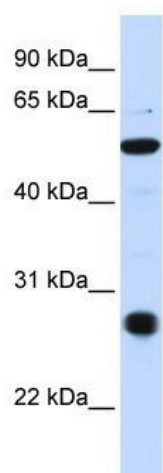
Product data:

Product Type:	Primary Antibodies
Applications:	WB
Recommended Dilution:	WB
Reactivity:	Human
Host:	Rabbit
Isotype:	IgG
Clonality:	Polyclonal
Immunogen:	The immunogen for anti-C6orf113 antibody: synthetic peptide directed towards the C terminal of human C6orf113. Synthetic peptide located within the following region: LCLLILDPGCPREMQLLKQDIEASSLKQLRKSMGNLKHKQYQILAVEG
Formulation:	Liquid. Purified antibody supplied in 1x PBS buffer with 0.09% (w/v) sodium azide and 2% sucrose. <i>Note that this product is shipped as lyophilized powder to China customers.</i>
Purification:	Affinity Purified
Conjugation:	Unconjugated
Storage:	Store at -20°C as received.
Stability:	Stable for 12 months from date of receipt.
Predicted Protein Size:	66 kDa
Gene Name:	zinc finger with UFM1 specific peptidase domain
Database Link:	NP_659499 Entrez Gene 221302 Human Q96AP4
Background:	The exact function of C6orf113 remains unknown.
Synonyms:	C6orf113; dj41217.3
Note:	Immunogen Sequence Homology: Human: 100%; Rabbit: 93%; Mouse: 92%; Dog: 86%; Pig: 86%; Rat: 86%; Horse: 86%; Bovine: 86%; Guinea pig: 86%



[View online »](#)

Product images:



WB Suggested Anti-C6orf113 Antibody Titration:
0.2-1 ug/ml; ELISA Titer: 1: 62500; Positive
Control: Hela cell lysate