

Product datasheet for **TA345513**

ZNF25 Rabbit Polyclonal Antibody

Product data:

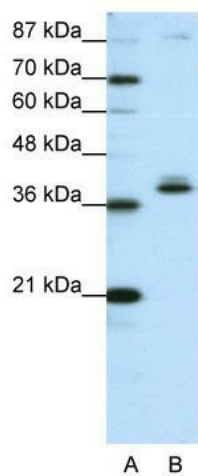
Product Type:	Primary Antibodies
Applications:	WB
Recommended Dilution:	WB
Reactivity:	Human
Host:	Rabbit
Isotype:	IgG
Clonality:	Polyclonal
Immunogen:	The immunogen for anti-ZNF25 antibody: synthetic peptide directed towards the C terminal of human ZNF25. Synthetic peptide located within the following region: EKPYACKCEGKSFQKSHFIIHQKHTGKPYECQECGETFIQKSQLTAH
Formulation:	Liquid. Purified antibody supplied in 1x PBS buffer with 0.09% (w/v) sodium azide and 2% sucrose. <i>Note that this product is shipped as lyophilized powder to China customers.</i>
Purification:	Protein A purified
Conjugation:	Unconjugated
Storage:	Store at -20°C as received.
Stability:	Stable for 12 months from date of receipt.
Predicted Protein Size:	40 kDa
Gene Name:	zinc finger protein 25
Database Link:	NP_659448 Entrez Gene 219749 Human P17030
Background:	ZNF25 contains 1 KRAB domain and 12 C2H2-type zinc fingers. ZNF25 belongs to the krueppel C2H2-type zinc-finger protein family and may be involved in transcriptional regulation.
Synonyms:	KOX19; Zfp9
Note:	Immunogen Sequence Homology: Rat: 100%; Horse: 100%; Human: 100%; Pig: 93%; Mouse: 93%; Bovine: 93%; Rabbit: 85%; Dog: 79%



[View online »](#)

Protein Families: Transcription Factors

Product images:



WB Suggested Anti-ZNF25 Antibody Titration:
1.25 ug/ml; ELISA Titer: 1: 62500; Positive Control:
HepG2 cell lysate