

Product datasheet for **TA345506**

RHOXF1 Rabbit Polyclonal Antibody

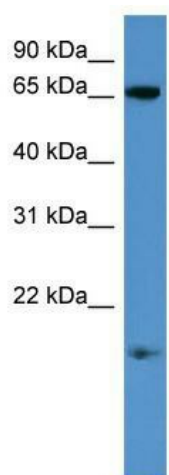
Product data:

Product Type:	Primary Antibodies
Applications:	WB
Recommended Dilution:	WB
Reactivity:	Human
Host:	Rabbit
Isotype:	IgG
Clonality:	Polyclonal
Immunogen:	The immunogen for anti-RHOXF1 antibody: synthetic peptide directed towards the C terminal of human RHOXF1. Synthetic peptide located within the following region: ELESVFRHTQYPDVPTRRELAENLGVTEDKVRVWFKNKRARCRRHQRELM
Formulation:	Liquid. Purified antibody supplied in 1x PBS buffer with 0.09% (w/v) sodium azide and 2% sucrose. <i>Note that this product is shipped as lyophilized powder to China customers.</i>
Purification:	Affinity Purified
Conjugation:	Unconjugated
Storage:	Store at -20°C as received.
Stability:	Stable for 12 months from date of receipt.
Predicted Protein Size:	20 kDa
Gene Name:	Rhox homeobox family member 1
Database Link:	NP_644811 Entrez Gene 158800 Human Q8NHV9
Background:	RHOXF1 may be a transcription factor involved in reproductive processes.
Synonyms:	OTEX; PEPP1
Note:	Immunogen Sequence Homology: Human: 100%
Protein Families:	Druggable Genome, Transcription Factors



[View online »](#)

Product images:



WB Suggested Anti-RHOXF1 Antibody Titration:
0.2-1 ug/ml; ELISA Titer: 1: 62500; Positive
Control: Jurkat cell lysate