

## Product datasheet for **TA345503**

### CTIP2 (BCL11B) Rabbit Polyclonal Antibody

#### Product data:

Product Type:	Primary Antibodies
Applications:	WB
Recommended Dilution:	WB
Reactivity:	Human
Host:	Rabbit
Isotype:	IgG
Clonality:	Polyclonal
Immunogen:	The immunogen for anti-BCL11B antibody: synthetic peptide directed towards the C terminal of human BCL11B. Synthetic peptide located within the following region: RHMKTHGQIGKEYRCDICQMPFSVYSTLEKHMKKWHGEHLLTNDVKIEQ
Formulation:	Liquid. Purified antibody supplied in 1x PBS buffer with 0.09% (w/v) sodium azide and 2% sucrose. <i>Note that this product is shipped as lyophilized powder to China customers.</i>
Purification:	Affinity Purified
Conjugation:	Unconjugated
Storage:	Store at -20°C as received.
Stability:	Stable for 12 months from date of receipt.
Predicted Protein Size:	95 kDa
Gene Name:	B-cell CLL/lymphoma 11B
Database Link:	<a href="#">NP_612808</a> <a href="#">Entrez Gene 64919 Human</a> <a href="#">Q9C0K0</a>
Background:	This gene encodes a C2H2-type zinc finger protein and is closely related to BCL11A, a gene whose translocation may be associated with B-cell malignancies. The specific function of this gene has not yet been determined. Two alternatively spliced transcript variants, which encode distinct isoforms, have been reported.
Synonyms:	ATL1; ATL1-alpha; ATL1-beta; ATL1-delta; ATL1-gamma; CTIP-2; CTIP2; hRIT1-alpha; RIT1; ZNF856B

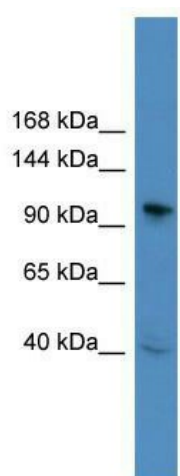


[View online »](#)

**Note:** Immunogen Sequence Homology: Dog: 100%; Pig: 100%; Rat: 100%; Horse: 100%; Human: 100%; Mouse: 100%; Bovine: 100%; Rabbit: 100%; Guinea pig: 100%; Zebrafish: 86%

**Protein Families:** Druggable Genome

### Product images:



WB Suggested Anti-BCL11B Antibody Titration:  
0.2-1 ug/ml; ELISA Titer: 1: 62500; Positive  
Control: Jurkat cell lysate; BCL11B is supported by  
BioGPS gene expression data to be expressed in  
Jurkat