

## Product datasheet for **TA345501**

### FOXP4 Rabbit Polyclonal Antibody

#### Product data:

Product Type:	Primary Antibodies
Applications:	IHC, WB
Recommended Dilution:	WB, IHC
Reactivity:	Human
Host:	Rabbit
Isotype:	IgG
Clonality:	Polyclonal
Immunogen:	The immunogen for anti-FOXP4 antibody: synthetic peptide directed towards the C terminal of human FOXP4. Synthetic peptide located within the following region: PRLSPPQYSHQVQVKEEPAEAEEDRQPGPPLGAPNPSASGPPEDRDLEEE
Formulation:	Liquid. Purified antibody supplied in 1x PBS buffer with 0.09% (w/v) sodium azide and 2% sucrose. <i>Note that this product is shipped as lyophilized powder to China customers.</i>
Purification:	Protein A purified
Conjugation:	Unconjugated
Storage:	Store at -20°C as received.
Stability:	Stable for 12 months from date of receipt.
Predicted Protein Size:	72 kDa
Gene Name:	forkhead box P4
Database Link:	<a href="#">NP_612466</a> <a href="#">Entrez Gene 116113 Human</a> <a href="#">Q8IVH2</a>



[View online »](#)

**Background:**

FOXP4 belongs to subfamily P of the forkhead box (FOX) transcription factor family. Forkhead box transcription factors play important roles in the regulation of tissue- and cell type-specific gene transcription during both development and adulthood. Many members of the forkhead box gene family, including members of subfamily P, have roles in mammalian oncogenesis. FOXP4 may play a role in the development of tumors of the kidney and larynx. This gene belongs to subfamily P of the forkhead box (FOX) transcription factor family. Forkhead box transcription factors play important roles in the regulation of tissue- and cell type-specific gene transcription during both development and adulthood. Many members of the forkhead box gene family, including members of subfamily P, have roles in mammalian oncogenesis. This gene may play a role in the development of tumors of the kidney and larynx. Alternative splicing of this gene produces multiple transcript variants, some encoding different isoforms.

**Synonyms:**

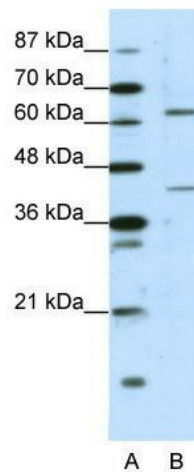
hFKHLA

**Note:**

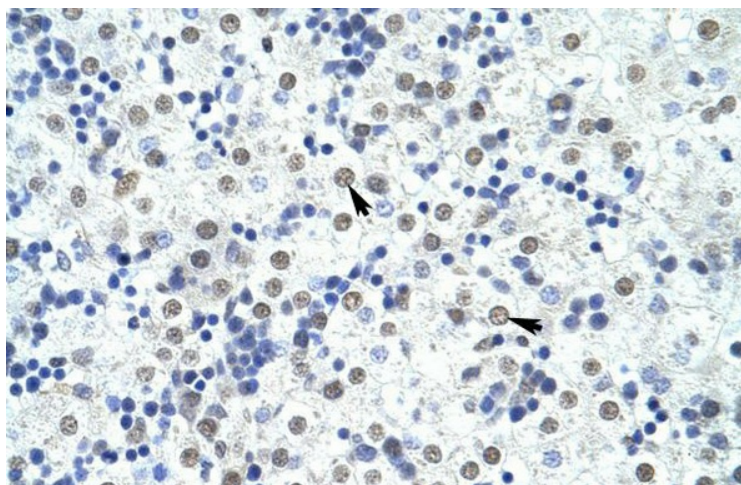
Immunogen Sequence Homology: Human: 100%; Rabbit: 100%; Pig: 93%; Horse: 93%; Mouse: 91%; Rat: 90%; Dog: 86%; Bovine: 86%; Guinea pig: 82%

**Protein Families:**

Transcription Factors

**Product images:**

WB Suggested Anti-FOXP4 Antibody Titration:  
1.25 ug/ml; ELISA Titer: 1: 62500; Positive Control:  
Raji cell lysate



Human Liver