

Product datasheet for **TA345499**

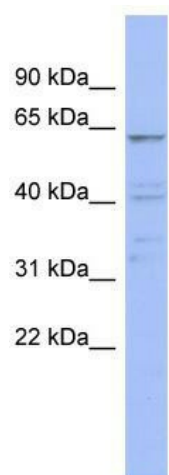
ZNF689 Rabbit Polyclonal Antibody

Product data:

Product Type:	Primary Antibodies
Applications:	WB
Recommended Dilution:	WB
Reactivity:	Human
Host:	Rabbit
Isotype:	IgG
Clonality:	Polyclonal
Immunogen:	The immunogen for anti-ZNF689 antibody: synthetic peptide directed towards the N terminal of human ZNF689. Synthetic peptide located within the following region: MAPPSAPLPAQGPGKARPSRKRGRPRALKFVDVAVYFSPEEWGCLRPAQ
Formulation:	Liquid. Purified antibody supplied in 1x PBS buffer with 0.09% (w/v) sodium azide and 2% sucrose. <i>Note that this product is shipped as lyophilized powder to China customers.</i>
Purification:	Affinity Purified
Conjugation:	Unconjugated
Storage:	Store at -20°C as received.
Stability:	Stable for 12 months from date of receipt.
Predicted Protein Size:	57 kDa
Gene Name:	zinc finger protein 689
Database Link:	NP_612456 Entrez Gene 115509 Human Q96CS4
Background:	ZNF689 may be involved in transcriptional regulation.
Synonyms:	TIPUH1
Note:	Immunogen Sequence Homology: Human: 100%; Mouse: 93%; Rabbit: 92%; Rat: 86%; Pig: 79%; Bovine: 79%; Guinea pig: 79%
Protein Families:	Transcription Factors



[View online »](#)

Product images:

WB Suggested Anti-ZNF689 Antibody Titration:
0.2-1 ug/ml; ELISA Titer: 1: 12500; Positive
Control: NCI-H226 cell lysate