

## Product datasheet for **TA345495**

### SLC26A10 Rabbit Polyclonal Antibody

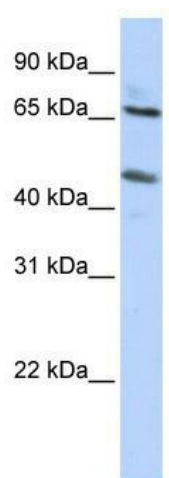
#### Product data:

Product Type:	Primary Antibodies
Applications:	WB
Recommended Dilution:	WB
Reactivity:	Human
Host:	Rabbit
Isotype:	IgG
Clonality:	Polyclonal
Immunogen:	The immunogen for anti-SLC26A10 antibody: synthetic peptide directed towards the N terminal of human SLC26A10. Synthetic peptide located within the following region: MRLDLASLMSAPKSLGSAFKSWRLDKAPSPQHTFPSTSIPGMAFALLASV
Formulation:	Liquid. Purified antibody supplied in 1x PBS buffer with 0.09% (w/v) sodium azide and 2% sucrose. <i>Note that this product is shipped as lyophilized powder to China customers.</i>
Purification:	Affinity Purified
Conjugation:	Unconjugated
Storage:	Store at -20°C as received.
Stability:	Stable for 12 months from date of receipt.
Predicted Protein Size:	60 kDa
Gene Name:	solute carrier family 26 member 10
Database Link:	<a href="#">NP_597996</a> <a href="#">Entrez Gene 65012 Human</a> <a href="#">Q8NG04</a>
Background:	SLC26A10 is a chloride/bicarbonate exchanger.
Synonyms:	FLJ32854
Note:	Immunogen Sequence Homology: Human: 100%
Protein Families:	Transmembrane



[View online »](#)

## Product images:



WB Suggested Anti-SLC26A10 Antibody Titration:  
0.2-1 ug/ml; ELISA Titer: 1: 62500; Positive  
Control: HepG2 cell lysate