

## Product datasheet for **TA345491**

### SUHW2 (ZNF280B) Rabbit Polyclonal Antibody

#### Product data:

Product Type:	Primary Antibodies
Applications:	WB
Recommended Dilution:	WB
Reactivity:	Human
Host:	Rabbit
Isotype:	IgG
Clonality:	Polyclonal
Immunogen:	The immunogen for anti-ZNF280B antibody: synthetic peptide directed towards the C terminal of human ZNF280B. Synthetic peptide located within the following region: PPETKVTIQVSLEPLQPGSVDVASITVSTSDSEPSLPRSKSKISKKSH
Formulation:	Liquid. Purified antibody supplied in 1x PBS buffer with 0.09% (w/v) sodium azide and 2% sucrose.
Purification:	Affinity Purified
Conjugation:	Unconjugated
Storage:	Store at -20°C as received.
Stability:	Stable for 12 months from date of receipt.
Predicted Protein Size:	61 kDa
Gene Name:	zinc finger protein 280B
Database Link:	<a href="#">NP_542942</a> <a href="#">Entrez Gene 140883 Human</a> <a href="#">Q86YH2</a>



[View online »](#)

**Background:**

ZNF280B contains 4 C2H2-type zinc fingers. It may function as a transcription factor. This gene was identified by homology to other species. Its encoded protein is approximately 78-88% identical to a predicted sheep protein of unknown function. The protein is also approximately 25% identical to the Drosophila protein suppressor of hairy wing, which is a leucine zipper protein that represses the function of transcriptional enhancers of the gypsy retrotransposon. Sequence Note: This RefSeq record was created from transcript and genomic sequence data because no single transcript was available for the full length of the gene. The extent of this transcript is supported by transcript alignments.

**Synonyms:**

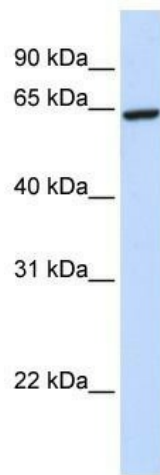
5 OY11.1; D87009.C22.3; SUHW2; ZNF279; ZNF632

**Note:**

Immunogen Sequence Homology: Human: 100%; Dog: 92%; Pig: 92%; Bovine: 92%

**Protein Families:**

Druggable Genome

**Product images:**

WB Suggested Anti-ZNF280B Antibody Titration:  
0.2-1 ug/ml; ELISA Titer: 1: 12500; Positive  
Control: 293T cell lysate