

Product datasheet for **TA345490**

DACH1 Rabbit Polyclonal Antibody

Product data:

Product Type:	Primary Antibodies
Applications:	WB
Recommended Dilution:	WB
Reactivity:	Human
Host:	Rabbit
Isotype:	IgG
Clonality:	Polyclonal
Immunogen:	The immunogen for anti-DACH1 antibody: synthetic peptide directed towards the C terminal of human DACH1. Synthetic peptide located within the following region: TLKQAASTDSLRLVNDLSLTP EIEADRSGGRTDAERTIQDGRLYLKTTVMY
Formulation:	Liquid. Purified antibody supplied in 1x PBS buffer with 0.09% (w/v) sodium azide and 2% sucrose. <i>Note that this product is shipped as lyophilized powder to China customers.</i>
Purification:	Affinity Purified
Conjugation:	Unconjugated
Storage:	Store at -20°C as received.
Stability:	Stable for 12 months from date of receipt.
Predicted Protein Size:	57 kDa
Gene Name:	dachshund family transcription factor 1
Database Link:	NP_542938 Entrez Gene 1602 Human Q9UI36
Background:	This gene encodes a chromatin-associated protein that associates with other DNA-binding transcription factors to regulate gene expression and cell fate determination during development. The protein contains a Ski domain that is highly conserved from Drosophila to human. Expression of this gene is lost in some forms of metastatic cancer, and is correlated with poor prognosis. Multiple transcript variants encoding different isoforms have been found for this gene.



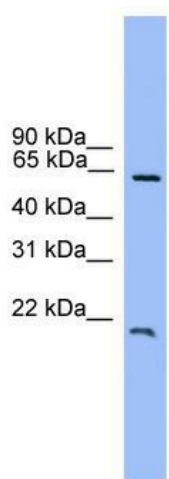
[View online »](#)

Synonyms: DACH

Note: Immunogen Sequence Homology: Pig: 100%; Rat: 100%; Horse: 100%; Human: 100%; Rabbit: 100%; Guinea pig: 100%; Dog: 93%; Mouse: 93%; Zebrafish: 93%

Protein Families: Transcription Factors

Product images:



WB Suggested Anti-DACH1 Antibody Titration:
0.2-1 ug/ml; ELISA Titer: 1: 12500; Positive
Control: Jurkat cell lysate