

Product datasheet for **TA345488**

MSL3L1 (MSL3) Rabbit Polyclonal Antibody

Product data:

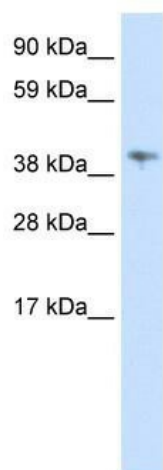
Product Type:	Primary Antibodies
Applications:	WB
Recommended Dilution:	WB
Reactivity:	Human
Host:	Rabbit
Isotype:	IgG
Clonality:	Polyclonal
Immunogen:	The immunogen for anti-MSL3L1 antibody: synthetic peptide directed towards the C terminal of human MSL3L1. Synthetic peptide located within the following region: FSEKNLKALLKHFDLFLRFLAEYHDDFFPESAYVAACEAHYSTKNPRAIY
Formulation:	Liquid. Purified antibody supplied in 1x PBS buffer with 0.09% (w/v) sodium azide and 2% sucrose. <i>Note that this product is shipped as lyophilized powder to China customers.</i>
Purification:	Protein A purified
Conjugation:	Unconjugated
Storage:	Store at -20°C as received.
Stability:	Stable for 12 months from date of receipt.
Predicted Protein Size:	41 kDa
Gene Name:	male-specific lethal 3 homolog (Drosophila)
Database Link:	NP_006791 Entrez Gene 10943 Human Q8N5Y2
Background:	MSL3L1 is a nuclear protein, which is thought to play a similar function in chromatin remodeling and transcriptional regulation. This gene has been found to undergo X inactivation.
Synonyms:	MSL3L1
Note:	Immunogen Sequence Homology: Dog: 100%; Pig: 100%; Rat: 100%; Horse: 100%; Human: 100%; Mouse: 100%; Bovine: 100%; Rabbit: 100%; Guinea pig: 100%



[View online »](#)

Protein Families: Transcription Factors

Product images:



WB Suggested Anti-MSL3L1 Antibody Titration:
0.625 ug/ml; ELISA Titer: 1: 62500; Positive
Control: Human Spleen