

Product datasheet for **TA345487**

MSL3L1 (MSL3) Rabbit Polyclonal Antibody

Product data:

Product Type:	Primary Antibodies
Applications:	WB
Recommended Dilution:	WB
Reactivity:	Human
Host:	Rabbit
Isotype:	IgG
Clonality:	Polyclonal
Immunogen:	The immunogen for anti-MSL3L1 antibody: synthetic peptide directed towards the N terminal of human MSL3L1. Synthetic peptide located within the following region: MSASEGMKFKFHSGEKVLCPFDPDKARVLYDAKIVDVIVGKDEKGRKIP
Formulation:	Liquid. Purified antibody supplied in 1x PBS buffer with 0.09% (w/v) sodium azide and 2% sucrose. <i>Note that this product is shipped as lyophilized powder to China customers.</i>
Purification:	Affinity Purified
Conjugation:	Unconjugated
Storage:	Store at -20°C as received.
Stability:	Stable for 12 months from date of receipt.
Predicted Protein Size:	60 kDa
Gene Name:	male-specific lethal 3 homolog (Drosophila)
Database Link:	NP_523353 Entrez Gene 10943 Human Q8N5Y2



[View online »](#)

Background:

MSL3L1 is a nuclear protein, which is thought to play a similar function in chromatin remodeling and transcriptional regulation. This gene has been found to undergo X inactivation. This gene encodes a nuclear protein and has similarity to drosophila male-specific lethal-3 gene. The drosophila protein plays a critical role in a dosage-compensation pathway, which equalizes X-linked gene expression in males and females. Thus this encoded protein is thought to play a similar function in chromatin remodeling and transcriptional regulation. This gene has been found to undergo X inactivation. There are four alternatively spliced transcript variants of this gene encoding different isoforms.

Synonyms:

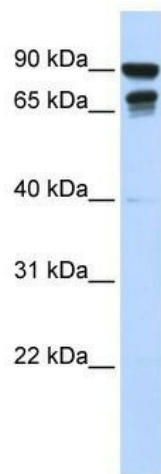
MSL3L1

Note:

Immunogen Sequence Homology: Dog: 100%; Pig: 100%; Human: 100%; Mouse: 100%; Bovine: 100%; Guinea pig: 100%; Rat: 86%

Protein Families:

Transcription Factors

Product images:

WB Suggested Anti-MSL3L1 Antibody Titration: 0.2-1 ug/ml; ELISA Titer: 1: 62500; Positive Control: 293T cell lysate; MSL3 is supported by BioGPS gene expression data to be expressed in HEK293T