

Product datasheet for **TA345484**

CREB3L1 Rabbit Polyclonal Antibody

Product data:

Product Type:	Primary Antibodies
Applications:	WB
Recommended Dilution:	WB
Reactivity:	Human
Host:	Rabbit
Isotype:	IgG
Clonality:	Polyclonal
Immunogen:	The immunogen for anti-CREB3L1 antibody: synthetic peptide directed towards the N terminal of human CREB3L1. Synthetic peptide located within the following region: MDAVLEPFPADRLFPGSSFLDLGDLNESDFLNNAHFPEHLDHFTENMEDF
Formulation:	Liquid. Purified antibody supplied in 1x PBS buffer with 0.09% (w/v) sodium azide and 2% sucrose. <i>Note that this product is shipped as lyophilized powder to China customers.</i>
Purification:	Protein A purified
Conjugation:	Unconjugated
Storage:	Store at -20°C as received.
Stability:	Stable for 12 months from date of receipt.
Predicted Protein Size:	57 kDa
Gene Name:	cAMP responsive element binding protein 3-like 1
Database Link:	NP_443086 Entrez Gene 90993 Human Q96BA8
Background:	The CREB3L1 gene encodes a protein with a transmembrane domain that is a transcriptional activator of the CREB/ATF family.
Synonyms:	OASIS
Note:	Immunogen Sequence Homology: Pig: 100%; Rat: 100%; Human: 100%; Mouse: 100%; Bovine: 100%; Rabbit: 100%; Guinea pig: 100%; Dog: 92%; Zebrafish: 85%

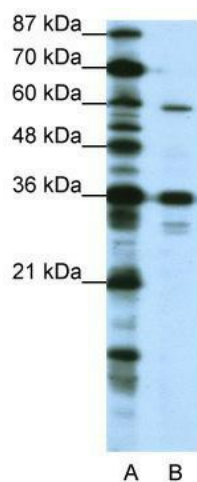


[View online »](#)

Protein Families: Transcription Factors

Protein Pathways: Huntington's disease, Melanogenesis, Prostate cancer

Product images:



WB Suggested Anti-CREB3L1 Antibody Titration:
1.25 ug/ml; ELISA Titer: 1: 312500; Positive
Control: HepG2 cell lysate