

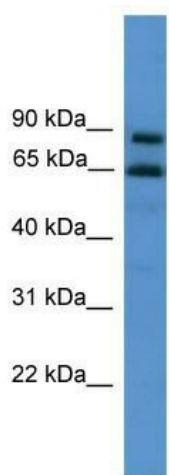
Product datasheet for **TA345482**

ZNF257 Rabbit Polyclonal Antibody

Product data:

Product Type:	Primary Antibodies
Applications:	WB
Recommended Dilution:	WB
Reactivity:	Human
Host:	Rabbit
Isotype:	IgG
Clonality:	Polyclonal
Immunogen:	The immunogen for anti-ZNF257 antibody: synthetic peptide directed towards the C terminal of human ZNF257. Synthetic peptide located within the following region: HLSQHKIIHTGEKPYKCEECGKPFNRFSYLTVHKRIHAGENPNKYEECGK
Formulation:	Liquid. Purified antibody supplied in 1x PBS buffer with 0.09% (w/v) sodium azide and 2% sucrose.
Purification:	Affinity Purified
Conjugation:	Unconjugated
Storage:	Store at -20°C as received.
Stability:	Stable for 12 months from date of receipt.
Predicted Protein Size:	66 kDa
Gene Name:	zinc finger protein 257
Database Link:	NP_258429 Entrez Gene 113835 Human Q9Y2Q1
Background:	The function of ZNF257 has not yet been determined.
Synonyms:	BMZF-4; BMZF4
Note:	Immunogen Sequence Homology: Human: 100%; Dog: 90%; Horse: 77%; Mouse: 77%
Protein Families:	Transcription Factors


[View online »](#)

Product images:

WB Suggested Anti-ZNF257 Antibody Titration:
0.2-1 ug/ml; ELISA Titer: 1: 312500; Positive
Control: NCI-H226 cell lysate; ZNF257 is
supported by BioGPS gene expression data to be
expressed in NCIH226