

Product datasheet for **TA345481**

SOX6 Rabbit Polyclonal Antibody

Product data:

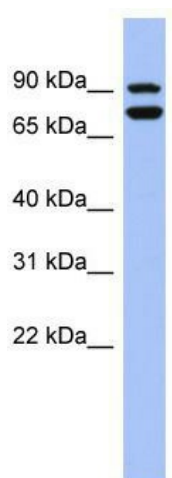
Product Type:	Primary Antibodies
Applications:	WB
Recommended Dilution:	WB
Reactivity:	Human
Host:	Rabbit
Isotype:	IgG
Clonality:	Polyclonal
Immunogen:	The immunogen for anti-SOX6 antibody: synthetic peptide directed towards the middle region of human SOX6. Synthetic peptide located within the following region: TYGMKTDGGSLAGNEMINGEDEMEMYDDYEDDPKSDYSSENEAPEAVSAN
Formulation:	Liquid. Purified antibody supplied in 1x PBS buffer with 0.09% (w/v) sodium azide and 2% sucrose. <i>Note that this product is shipped as lyophilized powder to China customers.</i>
Purification:	Affinity Purified
Conjugation:	Unconjugated
Storage:	Store at -20°C as received.
Stability:	Stable for 12 months from date of receipt.
Predicted Protein Size:	89 kDa
Gene Name:	SRY-box 6
Database Link:	NP_059978 Entrez Gene 55553 Human P35712
Background:	SOX6 is a member of the D subfamily of sex determining region y-related transcription factors that are characterized by a conserved DNA-binding domain termed the high mobility group box and by their ability to bind the minor groove of DNA. SOX6 is a trans
Synonyms:	HSSOX6; SOXD
Note:	Immunogen Sequence Homology: Dog: 100%; Pig: 100%; Rat: 100%; Horse: 100%; Human: 100%; Bovine: 100%; Rabbit: 100%; Guinea pig: 100%; Mouse: 93%



[View online »](#)

Protein Families: Transcription Factors

Product images:



WB Suggested Anti-SOX6 Antibody Titration: 0.2-1 ug/ml; ELISA Titer: 1: 62500; Positive Control: Human Stomach