

Product datasheet for **TA345479**

BTBD6 Rabbit Polyclonal Antibody

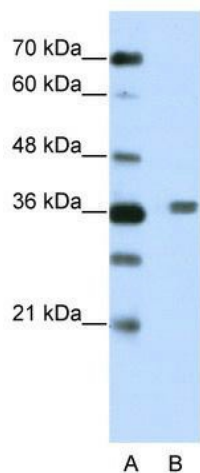
Product data:

Product Type:	Primary Antibodies
Applications:	IHC, WB
Recommended Dilution:	WB, IHC
Reactivity:	Human
Host:	Rabbit
Isotype:	IgG
Clonality:	Polyclonal
Immunogen:	The immunogen for anti-BTBD6 antibody: synthetic peptide directed towards the N terminal of human BTBD6. Synthetic peptide located within the following region: FVVGPPGATRTVPAHKYVLAVGSSVFYAMFYGDLAEVKSEIHIPDVEPAA
Formulation:	Liquid. Purified antibody supplied in 1x PBS buffer with 0.09% (w/v) sodium azide and 2% sucrose. <i>Note that this product is shipped as lyophilized powder to China customers.</i>
Purification:	Protein A purified
Conjugation:	Unconjugated
Storage:	Store at -20°C as received.
Stability:	Stable for 12 months from date of receipt.
Predicted Protein Size:	46 kDa
Gene Name:	BTB domain containing 6
Database Link:	NP_150374 Entrez Gene 90135 Human Q96KE9
Background:	The function remains unknown.
Synonyms:	BDPL
Note:	Immunogen Sequence Homology: Human: 100%; Bovine: 86%; Pig: 79%; Horse: 79%; Rabbit: 79%; Zebrafish: 79%; Guinea pig: 79%
Protein Families:	Druggable Genome

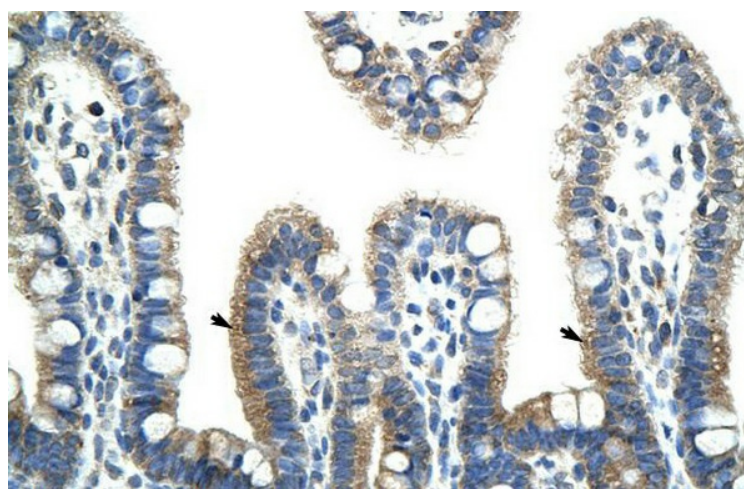


[View online »](#)

Product images:



WB Suggested Anti-BTBD6 Antibody Titration: 2.5 ug/ml; Positive Control: HepG2 cell lysate



Human Intestine