

## Product datasheet for **TA345476**

### PML Protein (PML) Rabbit Polyclonal Antibody

#### Product data:

Product Type:	Primary Antibodies
Applications:	WB
Recommended Dilution:	WB
Reactivity:	Human
Host:	Rabbit
Isotype:	IgG
Clonality:	Polyclonal
Immunogen:	The immunogen for anti-PML antibody: synthetic peptide directed towards the middle region of human PML. Synthetic peptide located within the following region: TTLPPAQPAFNLQALGTYFEGLLLEGPALARAEGVSTPLAGRGLAERASQQ
Formulation:	Liquid. Purified antibody supplied in 1x PBS buffer with 0.09% (w/v) sodium azide and 2% sucrose. <i>Note that this product is shipped as lyophilized powder to China customers.</i>
Purification:	Affinity Purified
Conjugation:	Unconjugated
Storage:	Store at -20°C as received.
Stability:	Stable for 12 months from date of receipt.
Predicted Protein Size:	97 kDa
Gene Name:	promyelocytic leukemia
Database Link:	<a href="#">NP_150241</a> <a href="#">Entrez Gene 5371 Human P29590</a>
Background:	PML is a member of the tripartite motif (TRIM) family. The TRIM motif includes three zinc-binding domains, a RING, a B-box type 1 and a B-box type 2, and a coiled-coil region. PML localizes to nuclear bodies where it functions as a transcription factor an
Synonyms:	MYL; PP8675; RNF71; TRIM19
Note:	Immunogen Sequence Homology: Human: 100%

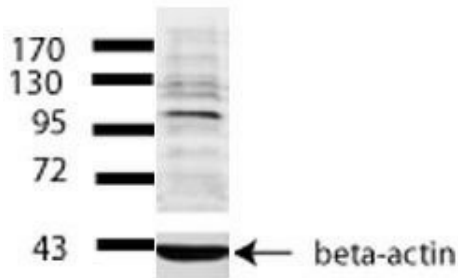


[View online »](#)

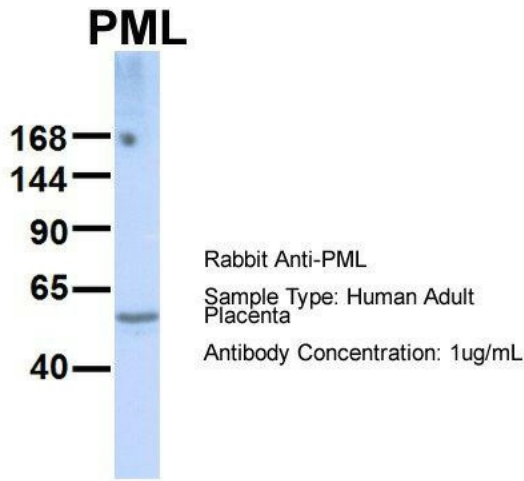
**Protein Families:** Druggable Genome, Transcription Factors

**Protein Pathways:** Acute myeloid leukemia, Pathways in cancer, Ubiquitin mediated proteolysis

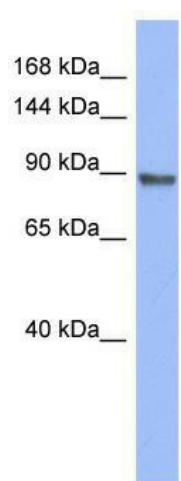
**Product images:**



PML antibody - middle region validated by WB using Neuroblastoma at 1: 500.



Hum. Adult Placenta; Host: Rabbit; Target Name: SERPINA3; Sample Tissue: Human Adult Placenta; Antibody Dilution: 1.0 ug/ml



WB Suggested Anti-PML Antibody Titration: 0.2-1 ug/ml; ELISA Titer: 1: 12500; Positive Control: ACHN cell lysate; There is BioGPS gene expression data showing that PML is expressed in ACHN