

## Product datasheet for **TA345475**

### TRIM14 Rabbit Polyclonal Antibody

#### Product data:

Product Type:	Primary Antibodies
Applications:	WB
Recommended Dilution:	WB
Reactivity:	Human
Host:	Rabbit
Isotype:	IgG
Clonality:	Polyclonal
Immunogen:	The immunogen for anti-TRIM14 antibody: synthetic peptide directed towards the middle region of human TRIM14. Synthetic peptide located within the following region: LSFEPVKSFFKGLVEAVESTLQTPLDIRLSPTNHAYSALKVSSPRLVSNR
Formulation:	Liquid. Purified antibody supplied in 1x PBS buffer with 0.09% (w/v) sodium azide and 2% sucrose. <i>Note that this product is shipped as lyophilized powder to China customers.</i>
Purification:	Affinity Purified
Conjugation:	Unconjugated
Storage:	Store at -20°C as received.
Stability:	Stable for 12 months from date of receipt.
Predicted Protein Size:	28 kDa
Gene Name:	tripartite motif containing 14
Database Link:	<a href="#">NP_150090</a> <a href="#">Entrez Gene 9830 Human Q14142</a>
Background:	TRIM14 is a member of the tripartite motif (TRIM) family. The TRIM motif includes three zinc-binding domains, a RING, a B-box type 1 and a B-box type 2, and a coiled-coil region. The protein localizes to cytoplasmic bodies and its function has not been de
Synonyms:	KIAA0129; OTTHUMP00000021761; OTTHUMP00000021762; OTTHUMP00000021763; OTTHUMP00000021764; tripartite motif-containing 14; tripartite motif protein 14; tripartite motif protein TRIM14

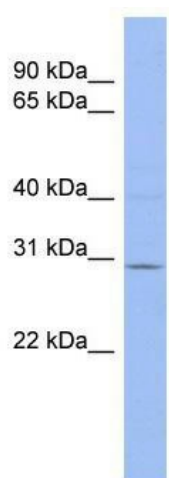


[View online »](#)

Note: Immunogen Sequence Homology: Human: 100%

Protein Families: Druggable Genome

### Product images:



WB Suggested Anti-TRIM14 Antibody Titration:  
0.2-1 ug/ml; ELISA Titer: 1: 1562500; Positive  
Control: THP-1 cell lysate