

## Product datasheet for **TA345473**

### Zinc finger protein 682 (ZNF682) Rabbit Polyclonal Antibody

#### Product data:

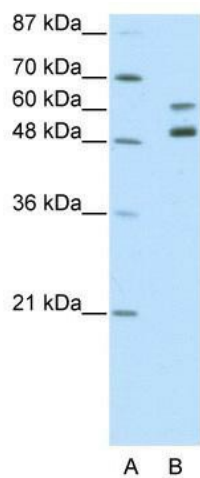
Product Type:	Primary Antibodies
Applications:	WB
Recommended Dilution:	WB
Reactivity:	Human
Host:	Rabbit
Isotype:	IgG
Clonality:	Polyclonal
Immunogen:	The immunogen for anti-ZNF682 antibody: synthetic peptide directed towards the N terminal of human ZNF682. Synthetic peptide located within the following region: ENYRNLVSLGLTVSKPELISRLEQRQEPWNVKRHETIAKPPAMSSHYTED
Formulation:	Liquid. Purified antibody supplied in 1x PBS buffer with 0.09% (w/v) sodium azide and 2% sucrose. <i>Note that this product is shipped as lyophilized powder to China customers.</i>
Purification:	Protein A purified
Conjugation:	Unconjugated
Storage:	Store at -20°C as received.
Stability:	Stable for 12 months from date of receipt.
Predicted Protein Size:	58 kDa
Gene Name:	zinc finger protein 682
Database Link:	<a href="#">NP_149973</a> <a href="#">Entrez Gene 91120 Human</a> <a href="#">O95780</a>
Background:	ZNF682 contains 1 KRAB domain and 11 C2H2-type zinc fingers and belongs to the krueppel C2H2-type zinc-finger protein family. ZNF682 may be involved in transcriptional regulation.
Synonyms:	BC39498_3
Note:	Immunogen Sequence Homology: Human: 100%; Dog: 92%; Pig: 92%; Rat: 92%; Mouse: 92%; Rabbit: 92%; Bovine: 85%



[View online »](#)

Protein Families: Transcription Factors

**Product images:**



WB Suggested Anti-ZNF682 Antibody Titration:  
2.5 ug/ml; ELISA Titer: 1: 12500; Positive Control:  
Jurkat cell lysate