

## Product datasheet for **TA345470**

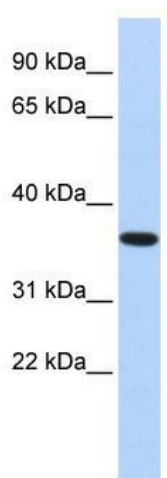
### CPXCR1 Rabbit Polyclonal Antibody

#### Product data:

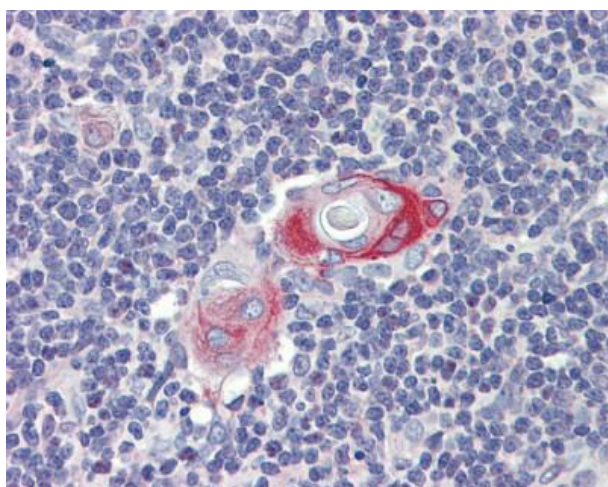
Product Type:	Primary Antibodies
Applications:	IHC, WB
Recommended Dilution:	WB, IHC
Reactivity:	Human
Host:	Rabbit
Isotype:	IgG
Clonality:	Polyclonal
Immunogen:	The immunogen for anti-CPXCR1 antibody: synthetic peptide directed towards the middle region of human CPXCR1. Synthetic peptide located within the following region: WANQLAAVAAGARVAGTQACATETIDTSRVSLRAPQEFMTSHSEAGSRIV
Formulation:	Liquid. Purified antibody supplied in 1x PBS buffer with 0.09% (w/v) sodium azide and 2% sucrose. <i>Note that this product is shipped as lyophilized powder to China customers.</i>
Purification:	Affinity Purified
Conjugation:	Unconjugated
Storage:	Store at -20°C as received.
Stability:	Stable for 12 months from date of receipt.
Predicted Protein Size:	35 kDa
Gene Name:	CPX chromosome region, candidate 1
Database Link:	<a href="#">NP_149037</a> <a href="#">Entrez Gene 53336 Human</a> <a href="#">Q8N123</a>
Background:	The function remains unknown.
Synonyms:	CT77
Note:	Immunogen Sequence Homology: Human: 100%



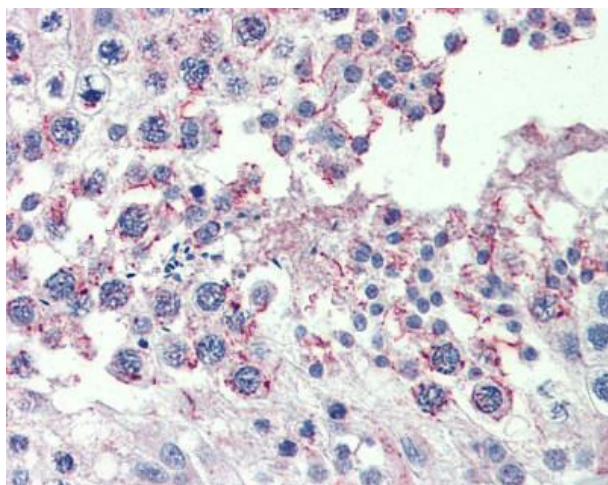
[View online »](#)

**Product images:**

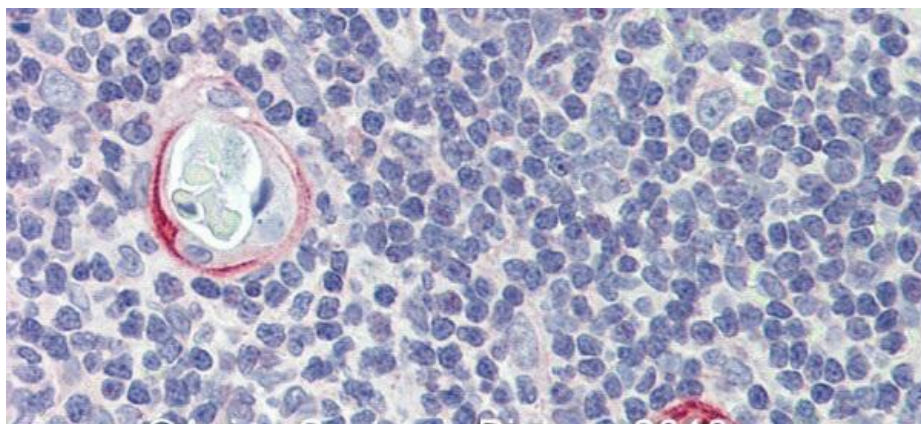
WB Suggested Anti-CPXCR1 Antibody Titration: 1 ug/ml; Positive Control: Fetal Brain Lysate



Anti-CPXCR1 antibody IHC staining of human thymus. Immunohistochemistry of formalin-fixed, paraffin-embedded tissue after heat-induced antigen retrieval. Antibody concentration 10 ug/ml.



Anti-CPXCR1 antibody IHC staining of human testis. Immunohistochemistry of formalin-fixed, paraffin-embedded tissue after heat-induced antigen retrieval. Antibody concentration 10 ug/ml.



Rabbit Anti-CPXCR1 Antibody; Paraffin Embedded Tissue: Human Thymus; Antibody Concentration: 10 ug/ml