

Product datasheet for TA345469

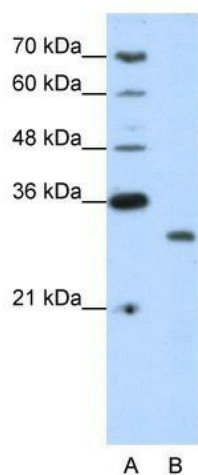
CPXCR1 Rabbit Polyclonal Antibody

Product data:

Product Type:	Primary Antibodies
Applications:	WB
Recommended Dilution:	WB
Reactivity:	Human
Host:	Rabbit
Isotype:	IgG
Clonality:	Polyclonal
Immunogen:	The immunogen for anti-CPXCR1 antibody: synthetic peptide directed towards the N terminal of human CPXCR1. Synthetic peptide located within the following region: SDTAGNAHKNSENEPPNDCSTDIESPSADPNMIYQVETNPINREPGTATS
Formulation:	Liquid. Purified antibody supplied in 1x PBS buffer with 0.09% (w/v) sodium azide and 2% sucrose.
Purification:	Protein A purified
Conjugation:	Unconjugated
Storage:	Store at -20°C as received.
Stability:	Stable for 12 months from date of receipt.
Predicted Protein Size:	35 kDa
Gene Name:	CPX chromosome region, candidate 1
Database Link:	NP_149037 Entrez Gene 53336 Human Q8N123
Background:	The function remains unknown.
Synonyms:	CT77
Note:	Immunogen Sequence Homology: Human: 100%


[View online »](#)

Product images:



WB Suggested Anti-CPXCR1 Antibody Titration:
1.25 ug/ml; Positive Control: Jurkat cell lysate