

## Product datasheet for **TA345468**

### TRIM5 alpha (TRIM5) Rabbit Polyclonal Antibody

#### Product data:

Product Type:	Primary Antibodies
Applications:	WB
Recommended Dilution:	WB
Reactivity:	Human
Host:	Rabbit
Isotype:	IgG
Clonality:	Polyclonal
Immunogen:	The immunogen for anti-TRIM5 antibody: synthetic peptide directed towards the N terminal of human TRIM5. Synthetic peptide located within the following region: CQACLTANHKKSMIDKGESSCPVCRISYQPENIRPNRHVANLVEKLEVK
Formulation:	Liquid. Purified antibody supplied in 1x PBS buffer with 0.09% (w/v) sodium azide and 2% sucrose. <i>Note that this product is shipped as lyophilized powder to China customers.</i>
Purification:	Affinity Purified
Conjugation:	Unconjugated
Storage:	Store at -20°C as received.
Stability:	Stable for 12 months from date of receipt.
Predicted Protein Size:	56 kDa
Gene Name:	tripartite motif containing 5
Database Link:	<a href="#">NP_149023</a> <a href="#">Entrez Gene 85363 Human</a> <a href="#">Q9C035</a>
Background:	The protein encoded by this gene is a member of the tripartite motif (TRIM) family. The TRIM motif includes three zinc-binding domains, a RING, a B-box type 1 and a B-box type 2, and a coiled-coil region. The protein forms homo-oligomers via the coiled-coil
Synonyms:	RNF88; TRIM5alpha
Note:	Immunogen Sequence Homology: Human: 100%

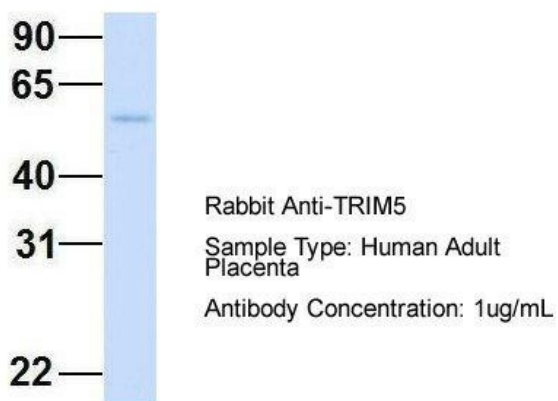


[View online »](#)

Protein Families: Druggable Genome

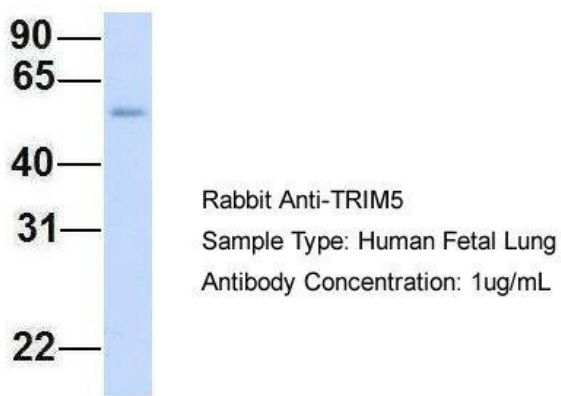
Product images:

### TRIM5



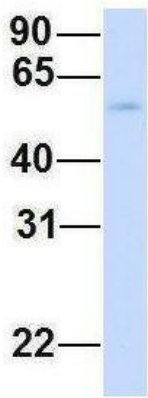
Hum. Adult Placenta; Host: Rabbit; Target Name: CHAD; Sample Tissue: Human Adult Placenta; Antibody Dilution: 1.0 ug/ml

### TRIM5



Host: Rabbit; Target Name: TRIM5; Sample Tissue: Human Fetal Lung; Antibody Dilution: 1.0 ug/ml

### TRIM5



Rabbit Anti-TRIM5  
 Sample Type: Human Fetal Liver  
 Antibody Concentration: 1ug/mL

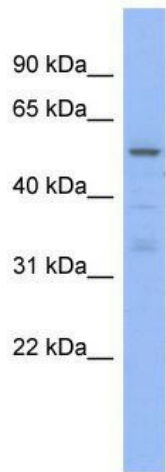
Host: Rabbit; Target Name: TRIM5; Sample  
 Tissue: Human Fetal Liver; Antibody Dilution: 1.0  
 ug/ml

### TRIM5



Rabbit Anti-TRIM5  
 Sample Type: Human Fetal Muscle  
 Antibody Concentration: 1ug/mL

Host: Rabbit; Target Name: TRIM5; Sample  
 Tissue: Human Fetal Muscle; Antibody Dilution:  
 1.0 ug/ml



WB Suggested Anti-TRIM5 Antibody Titration: 0.2-  
 1 ug/ml; ELISA Titer: 1: 62500; Positive Control:  
 PANC1 cell lysate; TRIM5 is supported by BioGPS  
 gene expression data to be expressed in PANC1