

Product datasheet for **TA345466**

Cyclin B3 (CCNB3) Rabbit Polyclonal Antibody

Product data:

Product Type:	Primary Antibodies
Applications:	WB
Recommended Dilution:	WB
Reactivity:	Human
Host:	Rabbit
Isotype:	IgG
Clonality:	Polyclonal
Immunogen:	The immunogen for anti-CCNB3 antibody: synthetic peptide directed towards the N terminal of human CCNB3. Synthetic peptide located within the following region: MLLPLPPQSSKPVPKKSQSSKIVPSHHDPSEKTGENCQTKISPSSLQESP
Formulation:	Liquid. Purified antibody supplied in 1x PBS buffer with 0.09% (w/v) sodium azide and 2% sucrose. <i>Note that this product is shipped as lyophilized powder to China customers.</i>
Purification:	Protein A purified
Conjugation:	Unconjugated
Storage:	Store at -20°C as received.
Stability:	Stable for 12 months from date of receipt.
Predicted Protein Size:	12 kDa
Gene Name:	cyclin B3
Database Link:	NP_391991 Entrez Gene 85417 Human Q8WWL7



[View online »](#)

Background:

CCNB3 belongs to the highly conserved cyclin family, whose members are characterized by a dramatic periodicity in protein abundance through the cell cycle. Cyclins function as regulators of CDK kinases. Different cyclins exhibit distinct expression and degradation patterns which contribute to the temporal coordination of each mitotic event. This cyclin may associate with CDC2 and CDK2 kinases, and be required for proper spindle reorganization and restoration of the interphase nucleus. The protein encoded by this gene belongs to the highly conserved cyclin family, whose members are characterized by a dramatic periodicity in protein abundance through the cell cycle. Cyclins function as regulators of CDK kinases. Different cyclins exhibit distinct expression and degradation patterns which contribute to the temporal coordination of each mitotic event. Studies of similar genes in chick and *Drosophila* suggest that this cyclin may associate with CDC2 and CDK2 kinases, and be required for proper spindle reorganization and restoration of the interphase nucleus. Two transcript variants encoding different isoforms have been found for this gene.

Synonyms:

cyclin B3; OTTHUMP00000023292; OTTHUMP00000023293

Note:

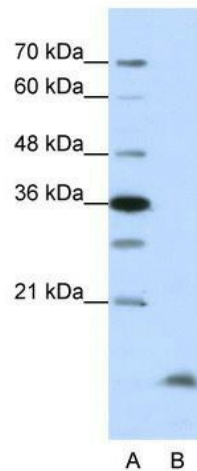
Immunogen Sequence Homology: Human: 100%

Protein Families:

Druggable Genome

Protein Pathways:

Cell cycle, p53 signaling pathway, Progesterone-mediated oocyte maturation

Product images:

WB Suggested Anti-CCNB3 Antibody Titration:
1.25 ug/ml; Positive Control: HepG2 cell lysate